

RBCK1 Rabbit pAb

Catalog Number: bs-19761R

Target Protein: RBCK1

Concentration: 1mg/ml

Form: Liquid

Host: Rabbit

Clonality: Polyclonal

Isotype: IgG

Applications: WB (1:500-2000)

Reactivity: Mouse (predicted:Human, Rat, Rabbit, Sheep, Cow, Dog)

Predicted MW: 56 kDa

Subcellular Nucleus

Locations:

Entrez Gene: 10616

Swiss Prot: Q9BYM8

Source: KLH conjugated synthetic peptide derived from human RBCK1/HBV associated factor 4: 251-350/510.

Purification: affinity purified by Protein A

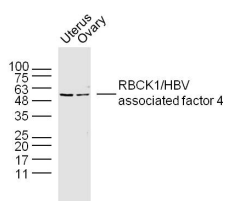
Storage: 0.01M TBS (pH7.4) with 1% BSA, 0.02% Proclin300 and 50% Glycerol.

Shipped at 4°C. Store at -20°C for one year. Avoid repeated freeze/thaw cycles.

Background: The protein encoded by this gene is similar to mouse UIP28/UbcM4 interacting protein.

Alternative splicing has been observed at this locus, resulting in distinct isoforms. [provided by RefSeq, Jul 2008]

VALIDATION IMAGES



Sample: Uterus(mouse) Lysate at 40 ug ovary(mouse) Lysate at 40 ug Primary: Anti-RBCK1/HBV associated factor 4 (bs-197614R) at 1/300 dilution Secondary: IRDye800CW Goat Anti-Rabbit IgG at 1/20000 dilution
Predicted band size: 56 kD Observed band size: 56 kD

PRODUCT SPECIFIC PUBLICATIONS

[IF=8.9] Jiali Ye. et al. Polystyrene nanoplastics and cadmium co-exposure aggravated cardiomyocyte damage in mice by regulating PANoptosis pathway. ENVIRON POLLUT. 2024 Mar;;123713 WB ; Mouse . 38462200