

bs-18683R**[Primary Antibody]****MARS2 Rabbit pAb****Bioss**
ANTIBODIES

www.bioss.com.cn

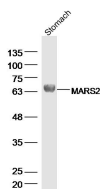
sales@bioss.com.cn

techsupport@bioss.com.cn

400-901-9800

— DATASHEET —

| | | |
|---|----------------------|---|
| Host: Rabbit | Isotype: IgG | Applications: WB (1:500-2000) |
| Clonality: Polyclonal | | Reactivity: Rat (predicted: Human, Mouse, Cow, Dog, Horse) |
| GeneID: 92935 | SWISS: Q96GW9 | |
| Target: MARS2 | | Predicted MW.: 63 kDa |
| Immunogen: KLH conjugated synthetic peptide derived from human MARS2: 31-130/593. | | Subcellular Location: Cytoplasm |
| Purification: affinity purified by Protein A | | |
| Concentration: 1mg/ml | | |
| Storage: 0.01M TBS (pH7.4) with 1% BSA, 0.02% Proclin300 and 50% Glycerol. Shipped at 4°C. Store at -20°C for one year. Avoid repeated freeze/thaw cycles. | | |
| Background: This gene produces a mitochondrial methionyl-tRNA synthetase protein that is encoded by the nuclear genome and imported to the mitochondrion. This protein likely functions as a monomer and is predicted to localize to the mitochondrial matrix. Mutations in this gene are associated with the autosomal recessive neurodegenerative disease spastic ataxia-3 (SPAX3). [provided by RefSeq, Apr 2014] | | |

— VALIDATION IMAGES —

Sample: Stomach (Rat) Lysate at 40 ug Primary:

Anti-MARS2 (bs-18683R) at 1/300 dilution

Secondary: IRDye800CW Goat Anti-Rabbit IgG at

1/20000 dilution Predicted band size: 63 kD

Observed band size: 65 kD