

bs-16373R**[Primary Antibody]****LASP1 Rabbit pAb****BioSS**
ANTIBODIES

www.bioss.com.cn

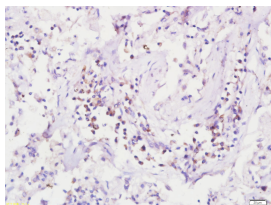
sales@bioss.com.cn

techsupport@bioss.com.cn

400-901-9800

— DATASHEET —

Host: Rabbit	Isotype: IgG	Applications: IHC-P (1:100-500) IHC-F (1:100-500) IF (1:100-500) Reactivity: Human (predicted: Mouse, Rat, Rabbit, Sheep, Cow, Chicken) Predicted MW.: 30 kDa Subcellular Location: Cytoplasm
Clonality: Polyclonal		
GeneID: 3927	SWISS: Q14847	
Target: LASP1		
Immunogen: KLH conjugated synthetic peptide derived from human LASP1: 1-100/261.		
Purification: affinity purified by Protein A		
Concentration: 1mg/ml		
Storage: 0.01M TBS (pH7.4) with 1% BSA, 0.02% Proclin300 and 50% Glycerol. Shipped at 4°C. Store at -20°C for one year. Avoid repeated freeze/thaw cycles.		
Background: This gene encodes a member of a subfamily of LIM proteins, characterized by a LIM motif and a domain of Src homology region 3, and also a member of the nebulin family of actin-binding proteins. The encoded protein is a cAMP and cGMP dependent signaling protein and binds to the actin cytoskeleton at extensions of the cell membrane. The encoded protein has been linked to metastatic breast cancer, hematopoietic tumors such as B-cell lymphomas, and colorectal cancer. [provided by RefSeq, Oct 2012]		

— VALIDATION IMAGES —

Paraformaldehyde-fixed, paraffin embedded (Human lung cancer); Antigen retrieval by boiling in sodium citrate buffer (pH6.0) for 15min; Block endogenous peroxidase by 3% hydrogen peroxide for 20 minutes; Blocking buffer (normal goat serum) at 37°C for 30min; Antibody incubation with (LASP1) Polyclonal Antibody, Unconjugated (bs-16373R) at 1:400 overnight at 4°C, followed by operating according to SP Kit(Rabbit) (sp-0023) instructions and DAB staining.

— SELECTED CITATIONS —

- **[IF=2.795]** Yuebin Zheng. et al. Circ_0023028 contributes to the progression of laryngeal squamous cell carcinoma by upregulating LASP1 through miR-486-3p. 2021 Mar 23 WB ;Human. 33755879