

Ephexin-1 Rabbit pAb

Catalog Number: bs-11458R

Target Protein: Ephexin-1

Concentration: 1mg/ml

Form: Liquid

Host: Rabbit

Clonality: Polyclonal

Isotype: IgG

Applications: IHC-P (1:100-500), IHC-F (1:100-500), IF (1:100-500)

Reactivity: Mouse, Rat (predicted:Human, Pig, Cow, Chicken, Dog, Horse)

Predicted MW: 82 kDa

Entrez Gene: 25791

Swiss Prot: Q8N5V2

Source: KLH conjugated synthetic peptide derived from human EPHEXIN: 451-550/710.

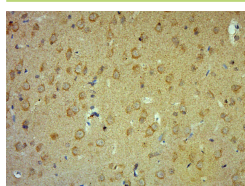
Purification: affinity purified by Protein A

Storage: 0.01M TBS (pH7.4) with 1% BSA, 0.02% Proclin300 and 50% Glycerol.

Shipped at 4°C. Store at -20°C for one year. Avoid repeated freeze/thaw cycles.

Background: EPHEXIN is a 710 amino acid protein that localizes to both the membrane and the cytoplasm and contains one SH3 domain, one PH domain and one DH domain. Expressed at high levels in brain and present at lower levels in lung tissue, EPHEXIN interacts with EphA4 and functions as a guanine nucleotide exchange factor (GEF) that is capable of activating Rho A, Rac 1 and Cdc42 and is thought to play a role in axon guidance and growth cone collapse. EPHEXIN is subject to Src-dependent phosphorylation, an event that increases the GEF activity of EPHEXIN toward Rho A. Human EPHEXIN, which exists as multiple alternatively spliced isoforms, shares a high degree of sequence homology with its mouse counterpart, suggesting a conserved role between species.

VALIDATION IMAGES



Paraformaldehyde-fixed, paraffin embedded (Mouse brain); Antigen retrieval by boiling in sodium citrate buffer (pH6.0) for 15min; Block endogenous peroxidase by 3% hydrogen peroxide for 20 minutes; Blocking buffer (normal goat serum) at 37°C for 30min; Antibody incubation with (Ephexin-1) Polyclonal Antibody, Unconjugated (bs-11458R) at 1:400 overnight at 4°C, followed by operating according to SP Kit(Rabbit) (sp-0023) instructions and DAB staining.