

bs-11444R**[Primary Antibody]****NOCT Rabbit pAb****BioSS**
ANTIBODIES

www.bioss.com.cn

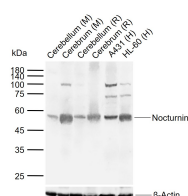
sales@bioss.com.cn

techsupport@bioss.com.cn

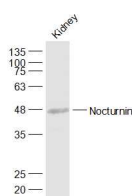
400-901-9800

— DATASHEET —

Host: Rabbit Clonality: Polyclonal GeneID: 25819 Target: NOCT Immunogen: KLH conjugated synthetic peptide derived from human Nocturnin: 91-190/431. Purification: affinity purified by Protein A Concentration: 1mg/ml Storage: 0.01M TBS (pH7.4) with 1% BSA, 0.02% Proclin300 and 50% Glycerol. Shipped at 4°C. Store at -20°C for one year. Avoid repeated freeze/thaw cycles. Background: Nocturnin is a 431 amino acid circadian deadenylase protein that is expressed in a broad range of tissues with greatest abundance in the liver, kidney and testis. Nocturnin plays a role in circadian regulation as well as diet-induced obesity. The mRNA abundance of Nocturnin exhibits circadian rhythmicity, peaking after dusk in photoreceptors, spleen, heart, kidney and liver. Nocturnin is thought to be responsible for turning off genes that are involved in circadian regulation. In Xenopus retinal photoreceptor cells, the rhythmic regulation of Nocturnin is thought to be controlled by phosphorylated CREB. Mice lacking Nocturnin remain lean on high fat diets with a reduction in visceral fat, which suggests that this protein may also be responsible for lipid metabolism and fat storage.	Isotype: IgG SWISS: Q9UK39 Applications: WB (1:500-2000) ELISA (1:5000-10000) Reactivity: Human, Mouse, Rat Predicted MW.: 48 kDa Subcellular Location: Cytoplasm ,Nucleus
--	--

— VALIDATION IMAGES —

Sample: Lane 1: Mouse Cerebellum tissue lysates
 Lane 2: Mouse Cerebrum tissue lysates Lane 3:
 Rat Cerebellum tissue lysates Lane 4: Rat
 Cerebrum tissue lysates Lane 5: Human A431 cell
 lysates Lane 6: Human HL-60 cell lysates
 Primary: Anti-Nocturnin (bs-11444R) at 1/1000
 dilution Secondary: IRDye800CW Goat Anti-
 Rabbit IgG at 1/20000 dilution Predicted band
 size: 48 kDa Observed band size: 53 kDa



Sample: Kidney (Mouse) Lysate at 40 ug Primary:
 Anti-Nocturnin (bs-11444R) at 1/1000 dilution
 Secondary: IRDye800CW Goat Anti-Rabbit IgG at
 1/20000 dilution Predicted band size: 48 kD
 Observed band size: 48 kD