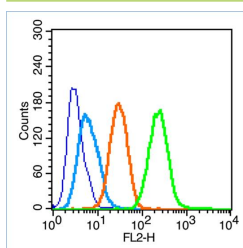


MAP1LC3A Rabbit pAb

Catalog Number: bs-4309R
Target Protein: MAP1LC3A
Concentration: 1mg/ml
Form: Liquid
Host: Rabbit
Clonality: Polyclonal
Isotype: IgG
Applications: Flow-Cyt (1µg/Test)
Reactivity: Human (predicted:Mouse, Rat, Pig, Cow, Chicken, Dog, Horse)
Predicted MW: 14 kDa
Entrez Gene: 84557
Swiss Prot: Q9H492
Source: KLH conjugated synthetic peptide derived from human Microtubule-associated proteins
1A/1B light chain 3A: 25-121/121.
Purification: affinity purified by Protein A
Storage: 0.01M TBS (pH7.4) with 1% BSA, 0.02% Proclin300 and 50% Glycerol.
Shipped at 4°C. Store at -20°C for one year. Avoid repeated freeze/thaw cycles.

VALIDATION IMAGES



Blank control (blue line): Hela (fixed with 70% ethanol (Overnight at 4°C) and then permeabilized with 90% ice-cold methanol for 30 min at -20°C). Primary Antibody (green line): Rabbit Anti-MAP1LC3A antibody (bs-4309R), Dilution: 1µg /10⁶ cells; Isotype Control Antibody (orange line): Rabbit IgG . Secondary Antibody (white blue line): Goat anti-rabbit IgG-PE, Dilution: 1µg /test.