

bs-10964R**[Primary Antibody]****CCR-2 Rabbit pAb****Bioss**
ANTIBODIES

www.bioss.com.cn

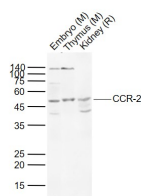
sales@bioss.com.cn

techsupport@bioss.com.cn

400-901-9800

— DATASHEET —

Host: Rabbit	Isotype: IgG	Applications: WB (1:500-2000)
Clonality: Polyclonal		Reactivity: Human, Mouse, Rat
GeneID: 729230	SWISS: P41597	
Target: CCR-2		
Immunogen: KLH conjugated synthetic peptide derived from human CCR-2: 180-206/374. < Extracellular >		Predicted MW.: 41 kDa
Purification: affinity purified by Protein A		Subcellular Location: Cell membrane
Concentration: 1mg/ml		
Storage: 0.01M TBS (pH7.4) with 1% BSA, 0.02% Proclin300 and 50% Glycerol. Shipped at 4°C. Store at -20°C for one year. Avoid repeated freeze/thaw cycles.		
Background: This gene encodes two isoforms of a receptor for monocyte chemoattractant protein-1, a chemokine which specifically mediates monocyte chemotaxis. Monocyte chemoattractant protein-1 is involved in monocyte infiltration in inflammatory diseases such as rheumatoid arthritis as well as in the inflammatory response against tumors. The receptors encoded by this gene mediate agonist-dependent calcium mobilization and inhibition of adenylyl cyclase. This gene is located in the chemokine receptor gene cluster region. Two alternatively spliced transcript variants are expressed by the gene. [provided by RefSeq, Mar 2009].		

— VALIDATION IMAGES —

Sample: Lane 1: Embryo (Mouse) Lysate at 40 ug
Lane 2: Thymus (Mouse) Lysate at 40 ug Lane 3:
Kidney (Rat) Lysate at 40 ug Primary: Anti-CCR-2
(bs-10964R) at 1/1000 dilution Secondary:
IRDye800CW Goat Anti-Rabbit IgG at 1/20000
dilution Predicted band size: 42-50 kD Observed
band size: 48 kD

— SELECTED CITATIONS —

- **[IF=4.932]** Jianqin Xue. et al. Astrocyte-derived CCL7 promotes microglia-mediated inflammation following traumatic brain injury. Int Immunopharmacol. 2021 Oct;99:107975 WB ;Mouse. 34293712
- **[IF=4.8]** Meng Liu. et al. Puerarin exerts an inhibitory effect on inflammatory infiltration in the cardiac tissue of EAM mice by regulation of the TNF- α /CCL2/CCR2 signal pathway. INT IMMUNOPHARMACOL. 2025 Jun;157:114721 IF ;Mouse. 40300354