

bs-2071R

[Primary Antibody]

E2 tag Rabbit pAb

Bioss
ANTIBODIES

www.bioss.com.cn

sales@bioss.com.cn

techsupport@bioss.com.cn

400-901-9800

— DATASHEET —

Host: Rabbit

Isotype: IgG

Clonality: Polyclonal

Target: E2 tag

Immunogen: KLH conjugated E2 Tag peptide: GVSSTSSDFRDR.

Purification: affinity purified by Protein A

Concentration: 1mg/ml

Storage: 0.01M TBS (pH7.4) with 1% BSA, 0.02% Proclin300 and 50% Glycerol.
Shipped at 4°C. Store at -20°C for one year. Avoid repeated freeze/thaw cycles.

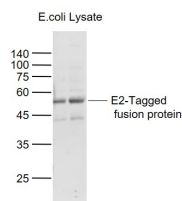
Background: The E2 Tag is a peptide which is derived from the Bovine Pappillomavirus type-1 transactivator protein E2 and consists of 10 amino acids(SSTSSDFRDR). The detection of E2-tagged proteins is based on the binding of mouse monoclonal antibodies specific to the tagged recombinant protein.

Applications: **WB** (1:1000-5000)

ELISA (1:1000-5000)

Reactivity: Species independent

— VALIDATION IMAGES —



Sample: Lane 1: E2-Tagged Fusion Protein
Overexpression E.coli Lysate (Cat#: bs-41403P)
at 2ug Lane 2: E2-Tagged Fusion Protein
Overexpression E.coli Lysate (Cat#: bs-41403P)
at 4ug Primary: Anti-E2 Tag (bs-2071R) at 1/1000
dilution Secondary: IRDye800CW Goat Anti-
Rabbit IgG at 1/20000 dilution Predicted band
size: 51 kD Observed band size: 51 kD