

Prolyl Endopeptidase Rabbit pAb

Catalog Number: bs-19182R

Target Protein: Prolyl Endopeptidase

Concentration: 1mg/ml

Form: Liquid

Host: Rabbit

Clonality: Polyclonal

Isotype: IgG

Applications: WB (1:500-2000)

Reactivity: Mouse (predicted:Human, Rat, Rabbit, Sheep, Cow, Chicken, Horse)

Predicted MW: 81 kDa

Subcellular Cytoplasm

Locations:

Entrez Gene: 5550

Swiss Prot: P48147

Source: KLH conjugated synthetic peptide derived from human Prolyl Endopeptidase: 141-240/710.

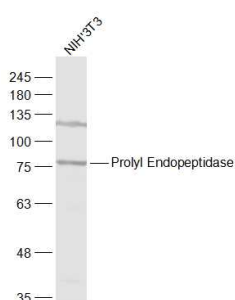
Purification: affinity purified by Protein A

Storage: 0.01M TBS (pH7.4) with 1% BSA, 0.02% Proclin300 and 50% Glycerol.

Shipped at 4°C. Store at -20°C for one year. Avoid repeated freeze/thaw cycles.

Background: The protein encoded by this gene is a cytosolic prolyl endopeptidase that cleaves peptide bonds on the C-terminal side of prolyl residues within peptides that are up to approximately 30 amino acids long. Prolyl endopeptidases have been reported to be involved in the maturation and degradation of peptide hormones and neuropeptides. [provided by RefSeq, Jul 2008]

VALIDATION IMAGES



Sample: NIH/3T3(Mouse) Cell Lysate at 30 ug Primary: Anti-Prolyl Endopeptidase (bs-19182R) at 1/1000 dilution Secondary: IRDye800CW Goat Anti-Rabbit IgG at 1/20000 dilution Predicted band size: 81 kD
Observed band size: 81 kD