

**bs-10773R****[ Primary Antibody ]****BioSS**  
**ANTIBODIES**

www.bioss.com.cn

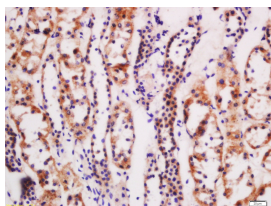
sales@bioss.com.cn

techsupport@bioss.com.cn

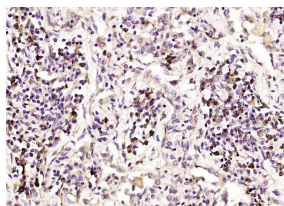
400-901-9800

**CTR1 Rabbit pAb****— DATASHEET —**

<b>Host:</b> Rabbit	<b>Isotype:</b> IgG	<b>Applications:</b> IHC-P (1:100-500) IHC-F (1:100-500) IF (1:100-500)  <b>Reactivity:</b> Human (predicted: Mouse, Rat, Rabbit, Pig, Sheep, Cow, Chicken, Horse)  <b>Predicted MW.:</b> 21 kDa  <b>Subcellular Location:</b> Cell membrane
<b>Clonality:</b> Polyclonal		
<b>GeneID:</b> 1317	<b>SWISS:</b> O15431	
<b>Target:</b> CTR1		
<b>Immunogen:</b> KLH conjugated synthetic peptide derived from human CTR1: 51-150/190. < Cytoplasmic >		
<b>Purification:</b> affinity purified by Protein A		
<b>Concentration:</b> 1mg/ml		
<b>Storage:</b> 0.01M TBS (pH7.4) with 1% BSA, 0.02% Proclin300 and 50% Glycerol. Shipped at 4°C. Store at -20°C for one year. Avoid repeated freeze/thaw cycles.		
<b>Background:</b> The protein encoded by this gene is a high-affinity copper transporter found in the cell membrane. The encoded protein functions as a homotrimer to effect the uptake of dietary copper. [provided by RefSeq, Aug 2011]		

**— VALIDATION IMAGES —**

Tissue/cell: human kidney tissue; 4% Paraformaldehyde-fixed and paraffin-embedded; Antigen retrieval: citrate buffer (0.01M, pH 6.0), Boiling bathing for 15min; Block endogenous peroxidase by 3% Hydrogen peroxide for 30min; Blocking buffer (normal goat serum, C-0005) at 37°C for 20 min; Incubation: Anti-CTR1 Polyclonal Antibody, Unconjugated (bs-10773R) 1:200, overnight at 4°C, followed by conjugation to the secondary antibody (SP-0023) and DAB (C-0010) staining



araformaldehyde-fixed, paraffin embedded (human lung carcinoma); Antigen retrieval by boiling in sodium citrate buffer (pH6.0) for 15min; Block endogenous peroxidase by 3% hydrogen peroxide for 20 minutes; Blocking buffer (normal goat serum) at 37°C for 30min; Antibody incubation with (CTR1) Polyclonal Antibody, Unconjugated (bs-10773R) at 1:200 overnight at 4°C, followed by operating according to SP Kit(Rabbit) (sp-0023) instructions and DAB staining.

**— SELECTED CITATIONS —**

- **[IF=5.2]** Shujing Zhou. et al. Comprehensive bioinformatics analytics and in vivo validation reveal SLC31A1 as an emerging diagnostic biomarker for acute myocardial infarction. AGING-US. 2024 May 15; 16(9): 8361–8377 IHC ;Mouse. 38713173
- **[IF=4]** Cui Yuting. et al. A novel cuproptosis-related diagnostic gene signature and differential expression validation in atherosclerosis. Molecular Biomedicine. 2023 Dec;4(1):1-15 IF ;Human. 37442861