

UCHL1+3 Rabbit pAb

Catalog Number: bs-11677R

Target Protein: UCHL1+3

Concentration: 1mg/ml

Form: Liquid

Host: Rabbit

Clonality: Polyclonal

Isotype: IgG

Applications: WB (1:500-2000), ICC/IF (1:50-1:200)

Reactivity: Human, Mouse, Rat (predicted:Rabbit, Pig, Sheep, Dog, Horse)

Predicted MW: 25 kDa

Subcellular: Cell membrane ,Cytoplasm

Locations:

Entrez Gene: 7345

Swiss Prot: P09936

Source: KLH conjugated synthetic peptide derived from human UCHL1+3: 141-223/223.

Purification: affinity purified by Protein A

Storage: 0.01M TBS (pH7.4) with 1% BSA, 0.02% Proclin300 and 50% Glycerol.

Shipped at 4°C. Store at -20°C for one year. Avoid repeated freeze/thaw cycles.

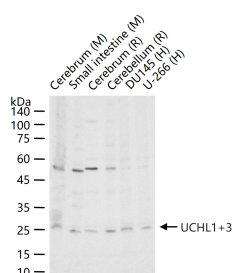
Background: catalyzes the hydrolysis of ubiquitin carboxy-terminal thiolesters to form ubiquitin and a thiol; may play a role in neuropathic pain [RGD].

Found in neuronal cell bodies and processes throughout the neocortex (at protein level).

Expressed in neurons and cells of the diffuse neuroendocrine system and their tumors.

Weakly expressed in ovary. Down-regulated in brains from Parkinson disease and Alzheimer disease patients.

VALIDATION IMAGES



25 ug total protein per lane of various lysates (see on figure) probed with UCHL1+3 polyclonal antibody, unconjugated (bs-11677R) at 1:1000 dilution and 4°C overnight incubation. Followed by conjugated secondary antibody incubation at r.t. for 60 min.

PRODUCT SPECIFIC PUBLICATIONS

[IF=2.081] Yi Wu. et al. The Transcriptional Cell Atlas of Testis Development in Sheep at Pre-Sexual Maturity. Curr Issues Mol Biol. 2022 Feb;44(2):483-497 IHC ; Sheep . 10.3390/cimb44020033