

**bs-1714R****[ Primary Antibody ]****Bioss**  
ANTIBODIES

www.bioss.com.cn

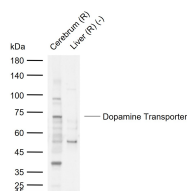
sales@bioss.com.cn

techsupport@bioss.com.cn

400-901-9800

**Dopamine Transporter Rabbit pAb****— DATASHEET —**

<b>Host:</b> Rabbit <b>Clonality:</b> Polyclonal <b>GeneID:</b> 6531 <b>Target:</b> Dopamine Transporter <b>Immunogen:</b> KLH conjugated synthetic peptide derived from human DAT1: 579-620/620. < Cytoplasmic > <b>Purification:</b> affinity purified by Protein A <b>Concentration:</b> 1mg/ml <b>Storage:</b> 0.01M TBS (pH7.4) with 1% BSA, 0.02% Proclin300 and 50% Glycerol. Shipped at 4°C. Store at -20°C for one year. Avoid repeated freeze/thaw cycles. <b>Background:</b> This gene encodes a dopamine transporter which is a member of the sodium- and chloride-dependent neurotransmitter transporter family. The 3' UTR of this gene contains a 40 bp tandem repeat, referred to as a variable number tandem repeat or VNTR, which can be present in 3 to 11 copies. Variation in the number of repeats is associated with idiopathic epilepsy, attention-deficit hyperactivity disorder, dependence on alcohol and cocaine, susceptibility to Parkinson disease and protection against nicotine dependence.[provided by RefSeq, Nov 2009]	<b>Isotype:</b> IgG <b>SWISS:</b> Q01959	<b>Applications:</b> WB (1:500-2000) <b>Reactivity:</b> Rat (predicted: Human, Mouse) <b>Predicted MW.:</b> 68 kDa <b>Subcellular Location:</b> Cell membrane ,Cytoplasm
---	---	---

**— VALIDATION IMAGES —**

Sample: Lane 1: Rat Cerebrum tissue lysates  
 Lane 2: Rat Liver tissue lysates(Negative control)  
 Primary: Anti-Dopamine Transporter (bs-1714R)  
 at 1/1000 dilution Secondary: IRDye800CW Goat  
 Anti-Rabbit IgG at 1/20000 dilution Predicted  
 band size: 68 kDa Observed band size: 73 kDa

**— SELECTED CITATIONS —**

- **[IF=11.799]** Chenyu Zhang, et al. The Nrf2-NLRP3-caspase-1 axis mediates the neuroprotective effects of Celastrol in Parkinson's disease. Redox Biol. 2021 Nov;47:102134 WB ;mouse. 34600334
- **[IF=6.543]** Huang Jian, et al. Icariside II Attenuates Methamphetamine-Induced Neurotoxicity and Behavioral Impairments via Activating the Keap1-Nrf2 Pathway. Oxid Med Cell Longev. 2022;2022:8400876 WB ;Mouse. 35387263
- **[IF=6.751]** Maria Teresa Rivera-Garcia et al. Sex and strain differences in dynamic and static properties of the mesolimbic dopamine system. Neuropsychopharmacology . 2020 Nov;45(12):2079-2086. IHC ;mouse. 32663840
- **[IF=4.831]** Shi L et al. Clotiquinol improves motor and non-motor deficits in MPTP-induced monkey model of Parkinson's disease through AKT/mTOR pathway. Aging (Albany NY) . 2020 May 18;12(10):9515-9533. WB ;Monkey. 32424108
- **[IF=4.868]** Li R et al. Salidroside Protects Dopaminergic Neurons by Enhancing PINK1/Parkin-Mediated Mitophagy.

Important Note: This product as supplied is intended for research use only, not for use in human, therapeutic or diagnostic applications.

