

## DOCK7 Rabbit pAb

Catalog Number: bs-11825R

Target Protein: DOCK7

Concentration: 1mg/ml

Form: Liquid

Host: Rabbit

Clonality: Polyclonal

Isotype: IgG

Applications: IHC-P (1:100-500), IHC-F (1:100-500), IF (1:100-500)

Reactivity: Rat (predicted:Human, Mouse, Rabbit, Sheep, Cow, Chicken, Dog, Horse)

Predicted MW: 242 kDa

Entrez Gene: 85440

Swiss Prot: Q96N67

Source: KLH conjugated synthetic peptide derived from human DOCK7: 1401-1500/2140.

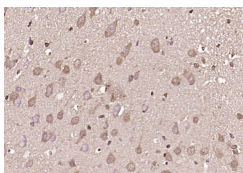
Purification: affinity purified by Protein A

Storage: 0.01M TBS (pH7.4) with 1% BSA, 0.02% Proclin300 and 50% Glycerol.

Shipped at 4°C. Store at -20°C for one year. Avoid repeated freeze/thaw cycles.

**Background:** DOCK 7 is a 2,140 amino acid protein that localizes to developing axons and contains one DHR-1 domain and one DHR-2 domain. Expressed in a variety of tissues, DOCK 7 functions as a guanine nucleotide exchange factor (GEF) that specifically activates Rac 1 and Rac 3 by catalyzing the exchange of bound GDP for free GTP. Multiple isoforms of DOCK 7 exist due to alternative splicing events.

### VALIDATION IMAGES



Paraformaldehyde-fixed, paraffin embedded (rat brain); Antigen retrieval by boiling in sodium citrate buffer (pH6.0) for 15min; Block endogenous peroxidase by 3% hydrogen peroxide for 20 minutes; Blocking buffer (normal goat serum) at 37°C for 30min; Antibody incubation with (DOCK7) Polyclonal Antibody, Unconjugated (bs-11825R) at 1:200 overnight at 4°C, followed by operating according to SP Kit(Rabbit) (sp-0023) instructions and DAB staining.