

**bs-17039R**

**[ Primary Antibody ]**

## KIF12 Rabbit pAb

**Bioss**  
ANTIBODIES

www.bioss.com.cn

sales@bioss.com.cn

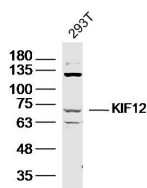
techsupport@bioss.com.cn

400-901-9800

### — DATASHEET —

<b>Host:</b> Rabbit	<b>Isotype:</b> IgG	<b>Applications:</b> WB (1:500-2000)
<b>Clonality:</b> Polyclonal		
<b>GeneID:</b> 113220	<b>SWISS:</b> Q96FN5	
<b>Target:</b> KIF12		
<b>Immunogen:</b> KLH conjugated synthetic peptide derived from human KIF12: 301-400/646.		
<b>Purification:</b> affinity purified by Protein A		<b>Reactivity:</b> Human (predicted: Mouse, Rat, Rabbit, Pig, Sheep, Dog)
<b>Concentration:</b> 1mg/ml		
<b>Storage:</b> 0.01M TBS (pH7.4) with 1% BSA, 0.02% Proclin300 and 50% Glycerol. Shipped at 4°C. Store at -20°C for one year. Avoid repeated freeze/thaw cycles.		
<b>Background:</b> KIF12 is a member of the kinesin superfamily of microtubule-associated molecular motors (see MIM 148760) that play important roles in intracellular transport and cell division (Nakagawa et al., 1997 [PubMed 9275178]).[supplied by OMIM, Mar 2008]		
		<b>Predicted MW.:</b> 71 kDa
		<b>Subcellular Location:</b> Cytoplasm

### — VALIDATION IMAGES —



Sample: 293T Cell (Human) Lysate at 40 ug  
Primary: Anti-KIF12 (bs-17039R) at 1/300 dilution  
Secondary: IRDye800CW Goat Anti-Rabbit IgG at 1/20000 dilution Predicted band size: 71 kD  
Observed band size: 71 kD