
C-erbB-2/HER2 Mouse mAb

Catalog Number: bsm-33051M

Target Protein: C-erbB-2/HER2

Concentration: 1mg/ml

Form: Size : 50ul/100ul/200ul

Liquid

Size : 200ug (PBS only)

Lyophilized

Note: Centrifuge tubes before opening. Reconstitute the lyophilized product in distilled water. Optimal concentration should be determined by the end user.

Host: Mouse

Clonality: Monoclonal

Clone No.: 13H9

Isotype: IgG

Applications: WB (1:500-1000), IHC-P (1:200-1000), IHC-F (1:200-1000), IF (1:200-1000)

Reactivity: Human

Predicted MW: 138 kDa

Entrez Gene: 2064

Swiss Prot: P04626

Source: Recombinant human HER2 protein: full length.

Purification: affinity purified by Protein G

Storage: Size : 50ul/100ul/200ul

0.01M TBS (pH7.4) with 1% BSA, 0.02% Proclin300 and 50% Glycerol.

Size : 200ug (PBS only)

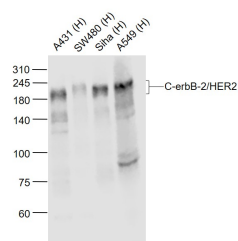
0.01M PBS

Shipped at 4°C. Store at -20°C for one year. Avoid repeated freeze/thaw cycles.

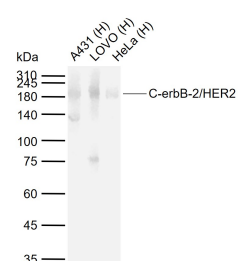
Background: This gene encodes a member of the epidermal growth factor (EGF) receptor family of receptor tyrosine kinases. This protein has no ligand binding domain of its own and therefore cannot bind growth factors. However, it does bind tightly to other ligand-bound EGF receptor family members to form a heterodimer, stabilizing ligand binding and enhancing kinase-mediated activation of downstream signalling pathways, such as those involving mitogen-activated protein kinase and phosphatidylinositol-3 kinase. Allelic variations at amino acid positions 654 and 655 of isoform a (positions 624 and 625 of isoform b) have been reported, with the most common allele, Ile654/Ile655, shown here.

Amplification and/or overexpression of this gene has been reported in numerous cancers, including breast and ovarian tumors. Alternative splicing results in several additional transcript variants, some encoding different isoforms and others that have not been fully characterized. [provided by RefSeq, Jul 2008].

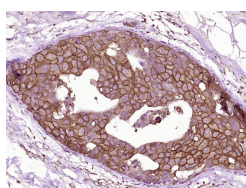
VALIDATION IMAGES



Sample: Lane 1: A431 (Human) Cell Lysate at 30 ug Lane 2: SW480 (Human) Cell Lysate at 30 ug Lane 3: Siha (Human) Cell Lysate at 30 ug Lane 4: A549 (Human) Cell Lysate at 30 ug Primary: Anti-C-erbB-2/HER2 (bsm-33051M) at 1/1000 dilution Secondary: IRDye800CW Goat Anti-Mouse IgG at 1/20000 dilution Predicted band size: 185/100-110 kD Observed band size: 185 kD



Sample: Lane 1: Human A431 cell lysates Lane 2: Human LOVO cell lysates Lane 3: Human HeLa cell lysates Primary: Anti-C-erbB-2/HER2 (bsm-33051M) at 1/200 dilution Secondary: IRDye800CW Goat Anti-Mouse IgG at 1/20000 dilution Predicted band size: 138 kDa Observed band size: 180 kDa



Paraformaldehyde-fixed, paraffin embedded (Human breast carcinoma); Antigen retrieval by boiling in sodium citrate buffer (pH6.0) for 15min; Block endogenous peroxidase by 3% hydrogen peroxide for 20 minutes; Blocking buffer (normal goat serum) at 37°C for 30min; Antibody incubation with (C-erbB-2/HER2) Monoclonal Antibody, conjugated (bsm-33051M) at 1:800 overnight at 4°C, followed by operating according to SP Kit(Mouse) (sp-0024) instructions and DAB staining.

PRODUCT SPECIFIC PUBLICATIONS

[IF=5.115] Zhou M et al. A Mansonone Derivative Coupled with Monoclonal Antibody 4D5-Modified Chitosan Inhibit AKR1C3 to Treat Castration-Resistant Prostate Cancer. Int J Nanomedicine. 2020 May 1;15:3087-3098. WB,IF ; Mouse . 32431503

[IF=2.559] Pan G et al. SPECT/CT imaging of HER2 expression in colon cancer-bearing nude mice using 125I-Herceptin.(2018) FEMS Microbiol. Lett.Oct 12;504(4):765-770. IF ; Mouse . 30217443

[IF=3.197] Wei Lu. et al. Molecular mechanisms by which targeted muscle reinnervation improves the microenvironment of spinal cord motor neurons and target muscles. NEUROSCI LETT. 2022 Oct;789:136879 WB ; Rat . 36152746