

bsm-33085M**[Primary Antibody]****BioSS**
ANTIBODIES

www.bioss.com.cn

sales@bioss.com.cn

techsupport@bioss.com.cn

400-901-9800

C-erbB-2/HER2 Mouse mAb**— DATASHEET —****Host:** Mouse**Isotype:** IgG**Clonality:** Monoclonal**CloneNo.:** 5C9**GeneID:** 2064**SWISS:** P04626**Target:** C-erbB-2/HER2**Purification:** affinity purified by Protein G**Concentration:** 1mg/ml

Storage: Size : 50ul/100ul/200ul
0.01M TBS (pH7.4) with 1% BSA, 0.02% Proclin300 and 50% Glycerol.
Size : 200ug (PBS only)
0.01M PBS
Shipped at 4°C. Store at -20°C for one year. Avoid repeated freeze/thaw cycles.

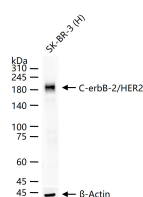
Background: This gene encodes a member of the epidermal growth factor (EGF) receptor family of receptor tyrosine kinases. This protein has no ligand binding domain of its own and therefore cannot bind growth factors. However, it does bind tightly to other ligand-bound EGF receptor family members to form a heterodimer, stabilizing ligand binding and enhancing kinase-mediated activation of downstream signalling pathways, such as those involving mitogen-activated protein kinase and phosphatidylinositol-3 kinase. Allelic variations at amino acid positions 654 and 655 of isoform a (positions 624 and 625 of isoform b) have been reported, with the most common allele, Ile654/Ile655, shown here. Amplification and/or overexpression of this gene has been reported in numerous cancers, including breast and ovarian tumors. Alternative splicing results in several additional transcript variants, some encoding different isoforms and others that have not been fully characterized. [provided by RefSeq, Jul 2008].

Applications: **WB** (1:500-2000)
IHC-P (1:100-500)
IHC-F (1:100-500)
IF (1:100-500)

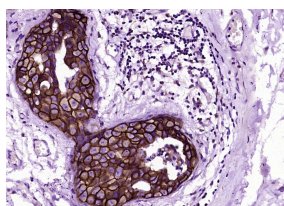
Reactivity: Human

Predicted
MW.: 138 kDa

Subcellular Cell membrane ,Cytoplasm
Location: ,Nucleus

— VALIDATION IMAGES —

25 ug total protein per lane of various lysates (see on figure) probed with C-erbB-2/HER2 monoclonal antibody, unconjugated (bsm-33085M) at 1:1000 dilution and 4°C overnight incubation. Followed by conjugated secondary antibody incubation at r.t. for 60 min.



Paraformaldehyde-fixed, paraffin embedded (Human breast carcinoma); Antigen retrieval by boiling in sodium citrate buffer (pH6.0) for 15min; Block endogenous peroxidase by 3% hydrogen peroxide for 20 minutes; Blocking buffer (normal goat serum) at 37°C for 30min; Antibody incubation with (C-erbB-2/HER2) Monoclonal Antibody, Unconjugated (bsm-33085M) at 1:400 overnight at 4°C, followed by operating according to SP Kit(Mouse) (sp-0024) instructions and DAB staining.

— SELECTED CITATIONS —

- **[IF=2.4]** Tao Liu. et al. Dapagliflozin attenuates cardiac remodeling and dysfunction in rats with β -adrenergic receptor

Important Note: This product as supplied is intended for research use only, not for use in human, therapeutic or diagnostic applications.

overactivation through restoring calcium handling and suppressing cardiomyocyte apoptosis. DIABETES VASC DIS RE. ;():
WB ;Rat. 37589258