

bs-21296R**[Primary Antibody]****RBM42 Rabbit pAb****Bioss**
ANTIBODIES

www.bioss.com.cn

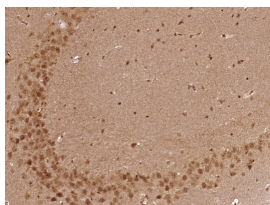
sales@bioss.com.cn

techsupport@bioss.com.cn

400-901-9800

— DATASHEET —

Host: Rabbit	Isotype: IgG	Applications: IHC-P (1:100-500)
Clonality: Polyclonal		IHC-F (1:100-500)
GeneID: 79171	SWISS: Q9BTD8	IF (1:100-500)
Target: RBM42		
Immunogen: KLH conjugated synthetic peptide derived from human RBM42: 381-480/480.		
Purification: affinity purified by Protein A		Reactivity: Mouse (predicted: Human, Rat, Rabbit, Pig, Sheep, Cow, Dog, Horse)
Concentration: 1mg/ml		
Storage: 0.01M TBS (pH7.4) with 1% BSA, 0.02% Proclin300 and 50% Glycerol. Shipped at 4°C. Store at -20°C for one year. Avoid repeated freeze/thaw cycles.		Predicted MW.: 50 kDa
Background: RNA binding motif protein 42 (RBM42) C-terminal domain interacts with HNRNPK C-terminal domain and RNA. RBM42 and HNRNPK are involved in the maintenance of cellular ATP levels during stress, possibly by protecting critical mRNAs. Upon stress response, RBM42 localizes with HNRNPK in cytoplasmic aggregates of stalled translational pre-initiation complexes called stress granules. There are 4 isoforms produced by alternative splicing.		Subcellular Location: Cytoplasm ,Nucleus

— VALIDATION IMAGES —

Paraformaldehyde-fixed, paraffin embedded (Mouse brain); Antigen retrieval by boiling in sodium citrate buffer (pH6.0) for 15min; Block endogenous peroxidase by 3% hydrogen peroxide for 20 minutes; Blocking buffer (normal goat serum) at 37°C for 30min; Antibody incubation with (RBM42) Polyclonal Antibody, Unconjugated (bs-21296R) at 1:400 overnight at 4°C, followed by operating according to SP Kit(Rabbit) (sp-0023) instructions and DAB staining.