

bs-3532R**[Primary Antibody]****Bioss**
ANTIBODIES

www.bioss.com.cn

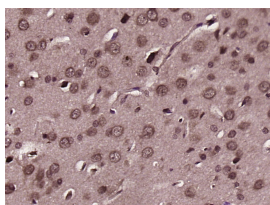
sales@bioss.com.cn

techsupport@bioss.com.cn

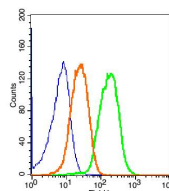
400-901-9800

PLCG 2 Rabbit pAb**DATASHEET**

Host: Rabbit	Isotype: IgG	Applications: IHC-P (1:100-500)
Clonality: Polyclonal		IHC-F (1:100-500)
GeneID: 5336	SWISS: P16885	IF (1:100-500)
Target: PLCG 2		Flow-Cyt (1µg /Test)
Immunogen: KLH conjugated synthetic peptide derived from human PLCG 2/PLC gamma 2: 645-750/1265.		Reactivity: Human, Rat (predicted: Mouse, Rabbit, Pig, Cow, Dog, Horse)
Purification: affinity purified by Protein A		Predicted MW.: 147 kDa
Concentration: 1mg/ml		Subcellular Location: Extracellular matrix ,Cell membrane ,Cytoplasm
Storage: 0.01M TBS (pH7.4) with 1% BSA, 0.02% Proclin300 and 50% Glycerol. Shipped at 4°C. Store at -20°C for one year. Avoid repeated freeze/thaw cycles.		
Background: Enzymes of the phospholipase C family catalyze the hydrolysis of phospholipids to yield diacylglycerols and water soluble phosphorylated derivatives of the lipid head groups. A number of these enzymes have specificity for phosphoinositides. Of the phosphoinositide specific phospholipase C enzymes, C beta is regulated by heterotrimeric G protein coupled receptors, while the closely related C gamma 1 and C gamma 2 enzymes are controlled by receptor tyrosine kinases. The C gamma 1 and C gamma 2 enzymes are composed of phospholipase domains that flank regions of homology to noncatalytic domains of the SRC oncogene product, SH2 and SH3.		

VALIDATION IMAGES

Paraformaldehyde-fixed, paraffin embedded (rat intestine tissue); Antigen retrieval by boiling in sodium citrate buffer (pH6.0) for 15min; Block endogenous peroxidase by 3% hydrogen peroxide for 20 minutes; Blocking buffer (normal goat serum) at 37°C for 30min; Antibody incubation with (HIST3H3) Polyclonal Antibody, Unconjugated (bs-0349R) at 1:400 overnight at 4°C, followed by operating according to SP Kit(Rabbit) (sp-0023) instructions and DAB staining.



Blank control(blue): Hep G2 Cells(fixed with 2% paraformaldehyde (10 min) and then permeabilized with ice-cold 90% methanol for 30 min on ice). Primary Antibody: Rabbit Anti-PLCG 2/AF647 Conjugated antibody (bs-3532R/AF647), Dilution: 1µg in 100 µL 1X PBS containing 0.5% BSA; Isotype Control Antibody: Rabbit IgG/AF647(orange) ,used under the same conditions.

SELECTED CITATIONS

- **[IF=7.5]** E. Diaz-Flores, et al. "PLC-γ and PI3K Link Cytokines to ERK Activation in Hematopoietic Cells with Normal and Oncogenic Kras." Sci. Signal. 6, ra105 (2013). Other ;="Mouse". 24300897
- **[IF=5.988]** Zhenni Liu. et al. CD73-Adenosine A1R Axis Regulates the Activation and Apoptosis of Hepatic Stellate Cells Through the PLC-IP3-Ca2+/DAG-PKC Signaling Pathway. FRONT PHARMACOL. 2022; 13: 922885 WB ;Rat. 35784730
- **[IF=2.56]** Xu, C., et al. "Proteomics Analysis of Hepatocyte Proliferation Regulated by FGF, PDGF, Insulin, Oncostatin M

Important Note: This product as supplied is intended for research use only, not for use in human, therapeutic or diagnostic applications.

and Interleukin 2 Signaling Pathways during Rat Liver Regeneration." J Proteomics Computational Biol 1.1 (2014): 8. WB
;="Rat". ISSN: 2332-4139