

bsm-30114M

[Primary Antibody]

human CD35 Mouse mAb

Bioss
ANTIBODIES

www.bioss.com.cn

sales@bioss.com.cn

techsupport@bioss.com.cn

400-901-9800

— DATASHEET —

Host: Mouse

Isotype: Mouse IgG1, k

Applications: Flow-Cyt (2ug/Test)

Clonality: Monoclonal

CloneNo.: 8E4

Reactivity: Human

Target: human CD35

Purification: affinity purified by Protein G

Storage: 0.01M TBS (pH7.4).

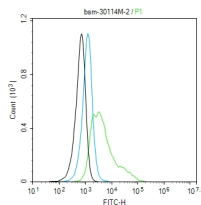
Shipped at 4°C. Store at -20°C for one year. Avoid repeated freeze/thaw cycles.

Predicted MW.: 274 kDa

Background: This gene is a member of the receptors of complement activation (RCA) family and is located in the 'cluster RCA' region of chromosome 1. The genome is polymorphic at this locus with allele-specific splice variants encoding different isoforms, based on the presence/absence of long homologous repeats (LHRs). The gene encodes a monomeric single-pass type I membrane glycoprotein found on erythrocytes, leukocytes, glomerular podocytes, and splenic follicular dendritic cells. The Knops blood group system is a system of antigens located on this protein. The protein mediates cellular binding to particles and immune complexes that have activated complement. Decreases in expression of this protein and/or mutations in this gene have been associated with gallbladder carcinomas, mesangiocapillary glomerulonephritis, systemic lupus erythematosus, sarcoidosis and Alzheimer's disease. Mutations in this gene have also been associated with a reduction in Plasmodium falciparum rosetting, conferring protection against severe malaria. [provided by RefSeq, May 2020]

Subcellular Location: Cell membrane

— VALIDATION IMAGES —



Blank control:HEL. Primary Antibody (green line): Mouse Anti-human CD35 antibody (bsm-30114M) Dilution: 2ug/Test; Secondary Antibody (white blue line) : Goat anti-mouse IgG-FITC Dilution: 0.5ug/Test. Isotype control (orange line) : Normal Mouse IgG Protocol
The cells were incubated in 5%BSA to block non-specific protein-protein interactions for 30 min at room temperature .Cells stained with Primary Antibody for 30 min at room temperature. The secondary antibody used for 40 min at room temperature. Acquisition of 20,000 events was performed.