

bs-12282R**[Primary Antibody]****CEP135 Rabbit pAb****BioSS**
ANTIBODIES

www.bioss.com.cn

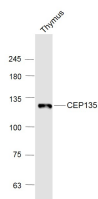
sales@bioss.com.cn

techsupport@bioss.com.cn

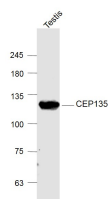
400-901-9800

— DATASHEET —

Host: Rabbit	Isotype: IgG	Applications: WB (1:500-2000)
Clonality: Polyclonal		Reactivity: Mouse (predicted: Human, Rat, Rabbit, Pig, Sheep, Dog, Horse)
GeneID: 9662	SWISS: Q66GS9	Predicted MW.: 133 kDa
Target: CEP135		Subcellular Location: Cytoplasm
Immunogen: KLH conjugated synthetic peptide derived from human CEP135: 1001-1100/1140.		
Purification: affinity purified by Protein A		
Concentration: 1mg/ml		
Storage: 0.01M TBS (pH7.4) with 1% BSA, 0.02% Proclin300 and 50% Glycerol. Shipped at 4°C. Store at -20°C for one year. Avoid repeated freeze/thaw cycles.		
Background: Centrosomal protein involved in centriole biogenesis. Acts as a scaffolding protein during early centriole biogenesis. Also required for centriole-centriole cohesion during interphase by acting as a platform protein for CEP250 at the centriole.		

— VALIDATION IMAGES —

Sample: Thymus (Mouse) Lysate at 40 ug
Primary: Anti-CEP135 (bs-12282R) at 1/1000 dilution
Secondary: IRDye800CW Goat Anti-Rabbit IgG at 1/20000 dilution
Predicted band size: 133 kD
Observed band size: 133 kD



Sample: Testis (Mouse) Lysate at 40 ug
Primary: Anti-CEP135 (bs-10196R) at 1/1000 dilution
Secondary: IRDye800CW Goat Anti-Rabbit IgG at 1/20000 dilution
Predicted band size: 133 kD
Observed band size: 133 kD