

**bs-12242R****[ Primary Antibody ]****ZFP100 / ZNF473 Rabbit pAb****Bioss**  
ANTIBODIES

www.bioss.com.cn

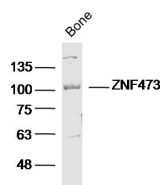
sales@bioss.com.cn

techsupport@bioss.com.cn

400-901-9800

**— DATASHEET —**

<b>Host:</b> Rabbit	<b>Isotype:</b> IgG	<b>Applications:</b> WB (1:500-2000)
<b>Clonality:</b> Polyclonal		<b>Reactivity:</b> Mouse (predicted: Human, Rat, Rabbit, Cow, Dog, Horse)
<b>GeneID:</b> 25888	<b>SWISS:</b> Q8WTR7	
<b>Target:</b> ZFP100 / ZNF473		<b>Predicted MW.:</b> 100 kDa
<b>Immunogen:</b> KLH conjugated synthetic peptide derived from human ZFP100/ZNF473: 701-830/871.		<b>Subcellular Location:</b> Nucleus
<b>Purification:</b> affinity purified by Protein A		
<b>Concentration:</b> 1mg/ml		
<b>Storage:</b> 0.01M TBS (pH7.4) with 1% BSA, 0.02% Proclin300 and 50% Glycerol. Shipped at 4°C. Store at -20°C for one year. Avoid repeated freeze/thaw cycles.		
<b>Background:</b> Involved in histone 3'-end pre-mRNA processing by associating with U7 snRNP and interacting with SLBP/pre-mRNA complex. Increases histone 3'-end pre-mRNA processing but has no effect on U7 snRNP levels, when overexpressed. Required for cell cycle progression from G1 to S phases.		

**— VALIDATION IMAGES —**

Sample: Bone (mouse) Lysate at 40 ug Primary:  
Anti- NF473(bs-12242R) at 1/300 dilution  
Secondary: IRDye800CW Goat Anti-Rabbit IgG at  
1/20000 dilution Predicted band size: 100 kD  
Observed band size: 100 kD