

**bsm-30013M****[ Primary Antibody ]****human CD11a Mouse mAb****BioSS**  
**ANTIBODIES**

www.bioss.com.cn

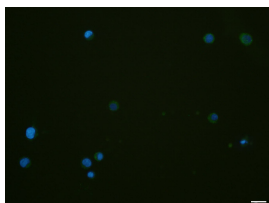
sales@bioss.com.cn

techsupport@bioss.com.cn

400-901-9800

**— DATASHEET —**

<b>Host:</b> Mouse	<b>Isotype:</b> Mouse IgG2b, k	<b>Applications:</b> <b>Flow-Cyt</b> (1ug/Test) <b>ICC/IF</b> (1:100)
<b>Clonality:</b> Monoclonal	<b>CloneNo.:</b> 11aF1	
<b>Target:</b> human CD11a		<b>Reactivity:</b> Human
<b>Purification:</b> affinity purified by Protein G		
<b>Storage:</b> 0.01M TBS (pH7.4). Shipped at 4°C. Store at -20°C for one year. Avoid repeated freeze/thaw cycles.		<b>Predicted MW.:</b> 126 kDa
<b>Background:</b> ITGAL encodes the integrin alpha L chain. Integrins are heterodimeric integral membrane proteins composed of an alpha chain and a beta chain. This I-domain containing alpha integrin combines with the beta 2 chain (ITGB2) to form the integrin lymphocyte function-associated antigen-1 (LFA-1), which is expressed on all leukocytes. LFA-1 plays a central role in leukocyte intercellular adhesion through interactions with its ligands, ICAMs 1-3 (intercellular adhesion molecules 1 through 3), and also functions in lymphocyte costimulatory signaling. Two transcript variants encoding different isoforms have been found for this gene. [provided by RefSeq, Jul 2008]		<b>Subcellular Location:</b> Cell membrane

**— VALIDATION IMAGES —**

Jurkat cell; 4% Paraformaldehyde-fixed; Triton X-100 at room temperature for 20 min; Blocking buffer (normal goat serum, C-0005) at 37°C for 20 min; Antibody incubation with (human CD11a) monoclonal Antibody, Unconjugated (bsm-30013M) 1:100, 90 minutes at 37°C; followed by a conjugated Goat Anti-Mouse IgG antibody at 37°C for 90 minutes, DAPI (blue, C02-04002) was used to stain the cell nuclei.