

bsm-30396A**[Primary Antibody]****mouse CD8a Rat mAb****BioSS**
ANTIBODIES

www.bioss.com.cn

sales@bioss.com.cn

techsupport@bioss.com.cn

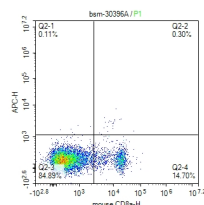
400-901-9800

— DATASHEET —**Host:** Rat**Isotype:** Rat IgG2a, k**Applications:** Flow-Cyt (1µg/Test)**Clonality:** Monoclonal**CloneNo.:** 6B2**Reactivity:** Mouse**Target:** mouse CD8a**Purification:** affinity purified by Protein G**Storage:** 0.01M TBS (pH7.4).

Shipped at 4°C. Store at -20°C for one year. Avoid repeated freeze/thaw cycles.

**Predicted
MW.:** 27 kDa

Background: The CD8 antigen is a cell surface glycoprotein found on most cytotoxic T lymphocytes that mediates efficient cell-cell interactions within the immune system. The CD8 antigen acts as a coreceptor with the T-cell receptor on the T lymphocyte to recognize antigens displayed by an antigen presenting cell in the context of class I MHC molecules. The coreceptor functions as either a homodimer composed of two alpha chains or as a heterodimer composed of one alpha and one beta chain. Both alpha and beta chains share significant homology to immunoglobulin variable light chains. This gene encodes the CD8 alpha chain. Multiple transcript variants encoding different isoforms have been found for this gene. The major protein isoforms of this gene differ by the presence or absence of a transmembrane domain and thus differ in being a membrane-anchored or secreted protein. [provided by RefSeq, May 2020]

**Subcellular
Location:** Cell membrane**— VALIDATION IMAGES —**

scatter diagram showing mouse spleen cells stained with bsm-30396A. The cells were incubated with the antibody (bsm-30396A, 1µg/Test) for 30 min at 22°C. Acquisition of >20,000 events was performed.