

bs-9109R**[Primary Antibody]****MAP4K6 Rabbit pAb****Bioss**
ANTIBODIES

www.bioss.com.cn

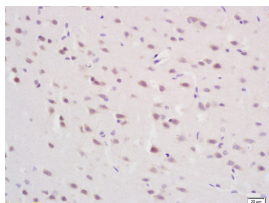
sales@bioss.com.cn

techsupport@bioss.com.cn

400-901-9800

— DATASHEET —

Host: Rabbit	Isotype: IgG	Applications: IHC-P (1:100-500) IHC-F (1:100-500) IF (1:50-200)
Clonality: Polyclonal		Reactivity: Rat (predicted: Human, Mouse, Rabbit, Pig, Cow)
GeneID: 50488		Predicted MW.: 147 kDa
Target: MAP4K6		Subcellular Location: Cell membrane ,Cytoplasm
Immunogen: KLH conjugated synthetic peptide derived from human MAP4K6: 951-1100/1332.		
Purification: affinity purified by Protein A		
Concentration: 1mg/ml		
Storage: 0.01M TBS (pH7.4) with 1% BSA, 0.02% Proclin300 and 50% Glycerol. Shipped at 4°C. Store at -20°C for one year. Avoid repeated freeze/thaw cycles.		
Background: MAP4K6 is a serine/threonine kinase belonging to the germinal center kinase (GCK) family. These kinases regulate a wide variety of cellular processes by coupling cell surface receptors to MAPK pathways. This kinase appears to act upstream of the JUN N-terminal pathway and may be involved in brain development. It may also play a role in the response to environmental stress, in cytoskeleton reorganization, cell adhesion, and cell motility. Alternative splicing occurs at this locus and four transcript variants encoding distinct isoforms have been identified.		

— VALIDATION IMAGES —

Tissue/cell: rat brain tissue; 4% Paraformaldehyde-fixed and paraffin-embedded; Antigen retrieval: citrate buffer (0.01M, pH 6.0), Boiling bathing for 15min; Block endogenous peroxidase by 3% Hydrogen peroxide for 30min; Blocking buffer (normal goat serum, C-0005) at 37°C for 20 min; Incubation: Anti-MAP4K6/MINK1 Polyclonal Antibody, Unconjugated(bs-9109R) 1:200, overnight at 4°C, followed by conjugation to the secondary antibody(SP-0023) and DAB(C-0010) staining