

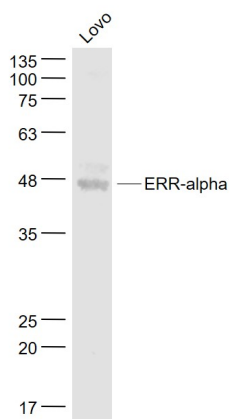
---

## ERR-alpha Rabbit pAb

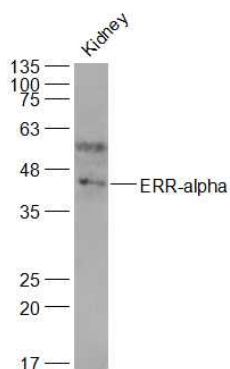
Catalog Number: bs-6998R  
Target Protein: ERR-alpha  
Concentration: 1mg/ml  
Form: Liquid  
Host: Rabbit  
Clonality: Polyclonal  
Isotype: IgG  
Applications: WB (1:500-2000), IHC-P (1:100-500), IHC-F (1:100-500), IF (1:50-200)  
Reactivity: Human, Mouse (predicted:Rat, Pig, Cow, Dog, Horse)  
Predicted MW: 47 kDa  
Entrez Gene: 2101  
Swiss Prot: P11474  
Source: KLH conjugated synthetic peptide derived from human Estrogen Related Receptor alpha: 101-200/423.  
Purification: affinity purified by Protein A  
Storage: 0.01M TBS (pH7.4) with 1% BSA, 0.02% Proclin300 and 50% Glycerol.  
Shipped at 4°C. Store at -20°C for one year. Avoid repeated freeze/thaw cycles.  
Background: Binds to an ERR-alpha response element (ERRE) containing a single consensus half-site, 5'-TNAAGGTCA-3'. Can bind to the medium-chain acyl coenzyme A dehydrogenase (MCAD) response element NRRE-1 and may act as an important regulator of MCAD promoter. Binds to the C1 region of the lactoferrin gene promoter. Requires dimerization and the coactivator, PGC-1A, for full activity. The ERRalpha/PGC1alpha complex is a regulator of energy metabolism.

### VALIDATION IMAGES

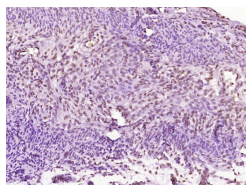
---



Sample: LoVo(Human) Cell Lysate at 30 ug Primary: Anti- ERR-alpha (bs-6998R) at 1/1000 dilution Secondary: IRDye800CW Goat Anti-Rabbit IgG at 1/20000 dilution Predicted band size: 47 kD Observed band size: 47 kD



Sample: Kidney (Mouse) Lysate at 40 ug Primary: Anti-ERR-alpha (bs-6998R) at 1/1000 dilution Secondary: IRDye800CW Goat Anti-Rabbit IgG at 1/20000 dilution Predicted band size: 47 kD Observed band size: 47 kD



Paraformaldehyde-fixed, paraffin embedded (Mouse uterus); Antigen retrieval by boiling in sodium citrate buffer (pH6.0) for 15min; Block endogenous peroxidase by 3% hydrogen peroxide for 20 minutes; Blocking buffer (normal goat serum) at 37°C for 30min; Antibody incubation with (ERR-alpha) Polyclonal Antibody, Unconjugated (bs-6998R) at 1:400 overnight at 4°C, followed by operating according to SP Kit(Rabbit) (sp-0023) instructions and DAB staining.

## PRODUCT SPECIFIC PUBLICATIONS

[IF=3.159] Wan Boyang. et al. Zearalenone promotes follicle development through activating SIRT1/PGC-1 $\alpha$  signaling pathway in the ovaries of weaned gilts. J Anim Sci. 2022 Feb;; WB ; Pig(Gilt) . 10.1093/jas/skac058

[IF=2.447] Panpan Dong. et al. Roles of ERR $\alpha$  and TGF- $\beta$  signaling in stemness enhancement induced by 1  $\mu$ M bisphenol A exposure via human neural stem cells. Exp Ther Med. 2022 Feb;23(2):1-10 WB ; Human . 35069845