

bs-19911R

[Primary Antibody]

PCDH19 Rabbit pAb

BioSS
ANTIBODIES

www.bioss.com.cn

sales@bioss.com.cn

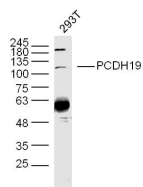
techsupport@bioss.com.cn

400-901-9800

— DATASHEET —

| | | |
|---|----------------------|--|
| Host: Rabbit | Isotype: IgG | Applications: WB (1:500-2000) |
| Clonality: Polyclonal | | |
| GeneID: 57526 | SWISS: Q8TAB3 | |
| Target: PCDH19 | | |
| Immunogen: KLH conjugated synthetic peptide derived from human PCDH19: 151-250/1148. | | |
| Purification: affinity purified by Protein A | | Reactivity: Human (predicted: Mouse, Rat, Rabbit, Sheep, Cow, Dog, Horse) |
| Concentration: 1mg/ml | | Predicted MW.: 124 kDa |
| Storage: 0.01M TBS (pH7.4) with 1% BSA, 0.02% Proclin300 and 50% Glycerol. Shipped at 4°C. Store at -20°C for one year. Avoid repeated freeze/thaw cycles. | | Subcellular Location: Cell membrane |
| Background: The protein encoded by this gene is a member of the delta-2 protocadherin subclass of the cadherin superfamily. The encoded protein is thought to be a calcium-dependent cell-adhesion protein that is primarily expressed in the brain. Defects in this gene are a cause of epilepsy female-restricted with mental retardation (EFMR). Three transcript variants encoding different isoforms have been found for this gene.[provided by RefSeq, May 2010] | | |

— VALIDATION IMAGES —



Sample: 293T Cell (Human) Lysate at 30 ug
Primary: Anti- PCDH19 (bs-19911R) at 1/300
dilution Secondary: IRDye800CW Goat Anti-
Rabbit IgG at 1/20000 dilution Predicted band
size: 124 kD Observed band size: 124 kD