

bs-8554R**[Primary Antibody]****Hemoglobin Beta Rabbit pAb****BioSS**
ANTIBODIES

www.bioss.com.cn

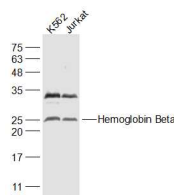
sales@bioss.com.cn

techsupport@bioss.com.cn

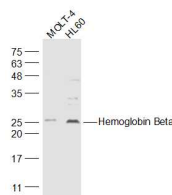
400-901-9800

— DATASHEET —

Host: Rabbit	Isotype: IgG	Applications: WB (1:500-2000)
Clonality: Polyclonal		Reactivity: Human
GeneID: 3043	SWISS: P68871	
Target: Hemoglobin Beta		
Immunogen: KLH conjugated synthetic peptide derived from human Hemoglobin beta: 51-147/147.		Predicted MW.: 15.5 kDa
Purification: affinity purified by Protein A		Subcellular Location: Secreted ,Cytoplasm
Concentration: 1mg/ml		
Storage: 0.01M TBS (pH7.4) with 1% BSA, 0.02% Proclin300 and 50% Glycerol. Shipped at 4°C. Store at -20°C for one year. Avoid repeated freeze/thaw cycles.		
Background: The alpha (HBA) and beta (HBB) loci determine the structure of the 2 types of polypeptide chains in adult hemoglobin, Hb A. The normal adult hemoglobin tetramer consists of two alpha chains and two beta chains. Mutant beta globin causes sickle cell anemia. Absence of beta chain causes beta-zero-thalassemia. Reduced amounts of detectable beta globin causes beta-plus-thalassemia. The order of the genes in the beta-globin cluster is 5'-epsilon -- gamma-G -- gamma-A -- delta -- beta--3'. [provided by RefSeq, Jul 2008].		

— VALIDATION IMAGES —

Sample: K562(Human) Cell Lysate at 30 ug
 Jurkat(Human) Cell Lysate at 30 ug Primary: Anti-Hemoglobin Beta (bs-8554R) at 1/1000 dilution Secondary: IRDye800CW Goat Anti-Rabbit IgG at 1/20000 dilution Predicted band size: 15.5 kD Observed band size: 25.5 kD



Sample: MOLT-4(Human) Cell Lysate at 30 ug
 HL60(Human) Cell Lysate at 30 ug Primary: Anti-Hemoglobin Beta (bs-8554R) at 1/1000 dilution Secondary: IRDye800CW Goat Anti-Rabbit IgG at 1/20000 dilution Predicted band size: 15.5 kD Observed band size: 25.5 kD