

bs-9905R**[Primary Antibody]****CFHL1 Rabbit pAb****Bioss**
ANTIBODIES

www.bioss.com.cn

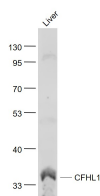
sales@bioss.com.cn

techsupport@bioss.com.cn

400-901-9800

— DATASHEET —

Host: Rabbit Clonality: Polyclonal GeneID: 3078 Target: CFHL1 Immunogen: KLH conjugated synthetic peptide derived from human CFHL1: 21-120/330. Purification: affinity purified by Protein A Concentration: 1mg/ml Storage: 0.01M TBS (pH7.4) with 1% BSA, 0.02% Proclin300 and 50% Glycerol. Shipped at 4°C. Store at -20°C for one year. Avoid repeated freeze/thaw cycles. Background: Might be involved in complement regulation. Can associate with lipoproteins and may play a role in lipid metabolism. The factor H gene family is a multidomain, multifunctional protein family whose individual members are defined by conserved structural elements, which display diverse yet often overlapping functions.	Isotype: IgG SWISS: Q03591	Applications: WB (1:500-2000) Reactivity: Mouse (predicted: Human, Rat, Rabbit) Predicted MW.: 36 kDa Subcellular Location: Secreted
--	---	---

— VALIDATION IMAGES —

Sample: Liver(Mouse) Lysate at 40 ug Primary:

Anti- CFHL1 (bs-9905R) at 1/1000 dilution

Secondary: IRDye800CW Goat Anti-Rabbit IgG at

1/20000 dilution Predicted band size: 36 kD

Observed band size: 36 kD

— SELECTED CITATIONS —

- **[IF=3.081]** Jiang Q et al. Bladder cancer hunting: a microfluidic paper - based analytical device. Electrophoresis . 2020 Sep;41(16-17):1509-1516. ELISA ;Human. 32530061