

bsm-33196M**[Primary Antibody]****CREB-1 Mouse mAb****Bioss**
ANTIBODIES

www.bioss.com.cn

sales@bioss.com.cn

techsupport@bioss.com.cn

400-901-9800

— DATASHEET —**Host:** Mouse**Isotype:** IgG**Clonality:** Monoclonal**CloneNo.:** 6B4**GeneID:** 1385**SWISS:** P16220**Target:** CREB-1**Purification:** affinity purified by Protein G**Concentration:** 1mg/ml

Storage: Size : 50ul/100ul/200ul
0.01M TBS (pH7.4) with 1% BSA, 0.02% Proclin300 and 50% Glycerol.
Size : 200ug (PBS only)
0.01M PBS
Shipped at 4°C. Store at -20°C for one year. Avoid repeated freeze/thaw cycles.

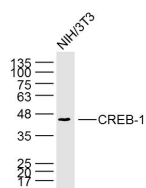
Background: The ATF/CREB family consists of transcription factors that function through binding to the cAMP responsive element (CRE) palindromic octanucleotide, TGACCTCA. The best characterized members of this gene family include CREB-1, CREB-2, ATF-1, ATF-2, ATF-3 and ATF-4. these transcription factors share highly-related COOH terminal leucine zipper dimerization and basic DNA bindings but are highly divergent in their amino terminal domains. Although each of the ATF/CREB proteins bind CREs in their homodimeric form, in certain instances they also bind as heterodimers, both within the ATF/CREB family and with members of the AP-1 transcription factor family. It has recently been shown that protein kinase A-mediated CREB phosphorylation results in its binding to a 265kDa nuclear protein designated CBP (CREB-binding protein), which may represent a CREB co-activator.

Applications: **WB** (1:500-1000)
IHC-P (1:100-500)
IHC-F (1:100-500)
IF (1:100-500)

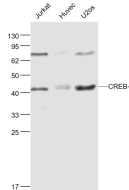
Reactivity: Human, Mouse

Predicted
MW.: 37 kDa

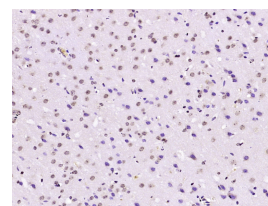
Subcellular
Location: Nucleus

— VALIDATION IMAGES —

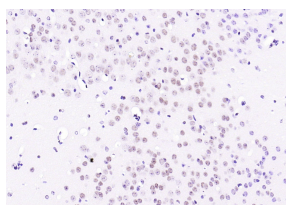
Sample: NIH/3T3 Cell (Mouse) Lysate at 40 ug
Primary: Anti-CREB-1 (bsm-33196M) at 1/1000
dilution Secondary: IRDye800CW Goat Anti-Mouse IgG at 1/20000 dilution Predicted band size: 37 kD Observed band size: 45 kD



Sample: Jurkat(Human) Cell Lysate at 30 ug
Huvec(Human) Cell Lysate at 30 ug
U2os(Human) Cell Lysate at 30 ug Primary: Anti-CREB-1 (bsm-33196M) at 1/1000 dilution
Secondary: IRDye800CW Goat Anti-Mouse IgG at 1/20000 dilution Predicted band size: 45 kD
Observed band size: 43 kD



Paraformaldehyde-fixed, paraffin embedded (mouse brain tissue); Antigen retrieval by boiling in sodium citrate buffer (pH6.0) for 15min; Block endogenous peroxidase by 3% hydrogen peroxide for 20 minutes; Blocking buffer (normal goat serum) at 37°C for 30min; Antibody incubation with (CREB-1) Monoclonal Antibody, Unconjugated (ascites of bsm-33196M) at 1:2000 overnight at 4°C, followed by a conjugated secondary (sp-0024) for 20 minutes and DAB staining.



Paraformaldehyde-fixed, paraffin embedded (Mouse brain); Antigen retrieval by boiling in sodium citrate buffer (pH6.0) for 15min; Block endogenous peroxidase by 3% hydrogen peroxide for 20 minutes; Blocking buffer (normal goat serum) at 37°C for 30min; Antibody incubation with (CREB-1) Monoclonal Antibody, Unconjugated (ascites of bsm-33196M 6B4) at 1:2000 overnight at 4°C, followed by operating according to SP Kit(Mouse) (sp-0024) instructions and DAB staining.

— SELECTED CITATIONS —

- **[IF=3.414]** Tang Q et al. Aqueous extract from You-Gui-Yin ameliorates cognitive impairment of chronic renal failure micethrough targeting hippocampal CaMKII α /CREB/BDNF and EPO/EPOR pathways. J Ethnopharmacol. 2019 Jul 15;239:111925. WB ;Mouse. 31055001
- **[IF=3.3]** Xue Chen. et al. Role of IGF1/IGFR signaling pathway in neuroprotective effect of Shengmai Dihuang Decoction on CIH-induced cognitive impairment. Journal of Traditional and Complementary Medicine. 2024 Nov;; WB ;Mouse. 10.1016/j.jtcme.2024.11.014