

bs-41199R**[Primary Antibody]**

Laminin alpha 1 Rabbit pAb

Bioss
ANTIBODIES

www.bioss.com.cn

sales@bioss.com.cn

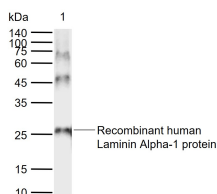
techsupport@bioss.com.cn

400-901-9800

— DATASHEET —

| | | |
|--|----------------------|--|
| Host: Rabbit | Isotype: IgG | Applications: WB (1:500-2000) |
| Clonality: Polyclonal | | |
| GeneID: 3908 | SWISS: P07942 | |
| Target: Laminin alpha 1 | | |
| Immunogen: KLH conjugated synthetic peptide derived from human Laminin alpha 1: N-terminal. | | |
| Purification: affinity purified by Protein A | | Reactivity: Human |
| Concentration: 1mg/ml | | |
| Storage: 0.01M TBS (pH7.4) with 1% BSA, 0.02% Proclin300 and 50% Glycerol. Shipped at 4°C. Store at -20°C for one year. Avoid repeated freeze/thaw cycles. | | Predicted MW.: 337 kDa |
| Background: The nuclear lamina consists of a two-dimensional matrix of proteins located next to the inner nuclear membrane. The lamin family of proteins make up the matrix and are highly conserved in evolution. During mitosis, the lamina matrix is reversibly disassembled as the lamin proteins are phosphorylated. Lamin proteins are thought to be involved in nuclear stability, chromatin structure and gene expression. Vertebrate lamins consist of two types, A and B. This gene encodes one of the two B type proteins, B1. Alternative splicing results in transcript variants and a duplication of this gene is associated with autosomal dominant adult-onset leukodystrophy (ADLD). [provided by RefSeq, Oct 2010]. | | Subcellular Location: Secreted ,Extracellular matrix ,Cell membrane |

— VALIDATION IMAGES —



Sample: Lane 1: Recombinant human Laminin Alpha-1 protein
Primary: Anti-Laminin alpha 1 (bs-41199R) at 1/1000 dilution
Secondary: IRDye800CW Goat Anti-Rabbit IgG at 1/20000 dilution
Predicted band size: 337 kDa
Observed band size: 26 kDa