

bs-9436R**[Primary Antibody]****TMEM204 Rabbit pAb****BioSS**
ANTIBODIES

www.bioss.com.cn

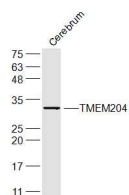
sales@bioss.com.cn

techsupport@bioss.com.cn

400-901-9800

— DATASHEET —

Host: Rabbit	Isotype: IgG	Applications: WB (1:500-2000)
Clonality: Polyclonal		
GeneID: 79652	SWISS: Q9BSN7	
Target: TMEM204		
Immunogen: KLH conjugated synthetic peptide derived from human TMEM204: 51-150/226.		
Purification: affinity purified by Protein A		Reactivity: Mouse (predicted: Human, Rat, Sheep, Cow)
Concentration: 1mg/ml		
Storage: 0.01M TBS (pH7.4) with 1% BSA, 0.02% Proclin300 and 50% Glycerol. Shipped at 4°C. Store at -20°C for one year. Avoid repeated freeze/thaw cycles.		Predicted MW.: 25 kDa
Background: System L amino acid transporters, such as SLC43A2, mediate sodium-independent transport of bulky neutral amino acids across cell membranes (Bodoy et al., 2005 [PubMed 15659399]).[supplied by OMIM, Mar 2008]		Subcellular Location: Cell membrane

— VALIDATION IMAGES —

Sample: Cerebrum (Mouse) Lysate at 40 ug
Primary: Anti-TMEM204 (bs-9436R) at 1/300
dilution Secondary: IRDye800CW Goat Anti-Rabbit IgG at 1/20000 dilution Predicted band size: 25 kD Observed band size: 30 kD