

**bs-4527R****[ Primary Antibody ]****CSFV E2 Rabbit pAb****BioSS**  
**ANTIBODIES**

www.bioss.com.cn

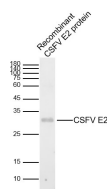
sales@bioss.com.cn

techsupport@bioss.com.cn

400-901-9800

**— DATASHEET —**

<b>Host:</b> Rabbit	<b>Isotype:</b> IgG	<b>Applications:</b> <b>WB</b> (1:500-2000) <b>ELISA</b> (1:5000-10000)
<b>Clonality:</b> Polyclonal		<b>Reactivity:</b> CSFV
<b>Target:</b> CSFV E2		
<b>Immunogen:</b> KLH conjugated synthetic peptide derived from CSFV Envelope glycoprotein E2: 951-1050/3898.		
<b>Purification:</b> affinity purified by Protein A		<b>Predicted MW.:</b> 42 kDa
<b>Concentration:</b> 1mg/ml		<b>Subcellular Location:</b> Cell membrane
<b>Storage:</b> 0.01M TBS (pH7.4) with 1% BSA, 0.02% Proclin300 and 50% Glycerol. Shipped at 4°C. Store at -20°C for one year. Avoid repeated freeze/thaw cycles.		
<b>Background:</b> Classical swine fever(CSF) is a kind of acute and intense contagious disease in swine, it material damages swine industry. CSF could cause swine appearing disseminated hemorrhage in systemic organ and tissue, degeneration and necrosis in small vascular and capillary endothelial cells. Classical swine fever virus (CSFV) belongs to genera Pestivirus, family Flaviviridae, it' s genome total length is 12.3Kb,including a big ORF, encoding 11 structural and nonstructural proteins.		

**— VALIDATION IMAGES —**

Sample: Lane 1: Recombinant CSFV E2 protein (200ng) (bs-20116P) Primary: Anti-CSFV E2 (bs-4527R) at 1/1000 dilution Secondary: IRDye800CW Goat Anti-Rabbit IgG at 1/20000 dilution Predicted band size: 42kDa Observed band size: 32kDa

**— SELECTED CITATIONS —**

- **[IF=5.818]** Xiaodong Zou. et al. Cholesterol Biosynthesis Modulates CSFV Replication. VIRUSES-BASEL. 2022 Jul;14(7):1450 IF ;Pig. 10.3390/v14071450