

GPR10 Rabbit pAb

Catalog Number: bs-11803R

Target Protein: GPR10

Concentration: 1mg/ml

Form: Liquid

Host: Rabbit

Clonality: Polyclonal

Isotype: IgG

Applications: WB (1:500-2000)

Reactivity: Mouse, Rat (predicted:Human, Pig, Sheep, Cow, Dog, Monkey)

Predicted MW: 41 kDa

Entrez Gene: 2834

Swiss Prot: P49683

Source: KLH conjugated synthetic peptide derived from human GPR10 protein: 161-260/370.

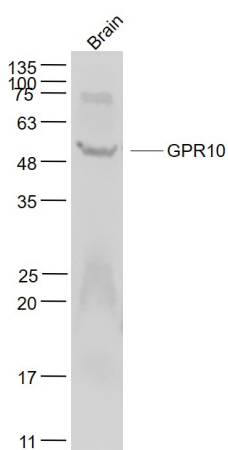
Purification: affinity purified by Protein A

Storage: 0.01M TBS (pH7.4) with 1% BSA, 0.02% Proclin300 and 50% Glycerol.

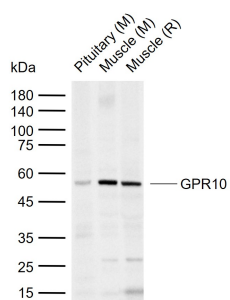
Shipped at 4°C. Store at -20°C for one year. Avoid repeated freeze/thaw cycles.

Background: GPR10 acts as a receptor for prolactin-releasing peptide (PrRP). GPR10 plays a role in the regulation of food intake, pain-signal processing and lactation. Primarily expressed in pituitary gland, it is repressed by bromocriptine. GPR10 interacts with various other proteins, including GRIP1, GRIP2 and PICK1.

VALIDATION IMAGES



Sample: Cerebrum (Mouse) Lysate at 40 ug Primary: Anti- GPR10 (bs-11803R) at 1/1000 dilution Secondary: IRDye800CW Goat Anti-Rabbit IgG at 1/20000 dilution Predicted band size: 41 kD Observed band size: 51 kD



Sample: Lane 1: Mouse Pituitary tissue lysates Lane 2: Mouse Muscle tissue lysates Lane 3: Rat Muscle tissue lysates Primary: Anti-GPR10 (bs-11803R) at 1/1000 dilution Secondary: IRDye800CW Goat Anti-Rabbit IgG at 1/20000 dilution Predicted band size: 41 kDa Observed band size: 52 kDa