

bs-12175R**[Primary Antibody]****KCNG3 Rabbit pAb****BioSS**
ANTIBODIES

www.bioss.com.cn

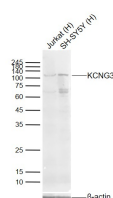
sales@bioss.com.cn

techsupport@bioss.com.cn

400-901-9800

— DATASHEET —

Host: Rabbit	Isotype: IgG	Applications: WB (1:500-2000)
Clonality: Polyclonal		Reactivity: Human (predicted: Mouse, Rat, Rabbit, Pig, Sheep, Cow, Dog, GuineaPig, Horse)
GeneID: 170850	SWISS: Q8TAE7	Predicted MW.: 50 kDa
Target: KCNG3		Subcellular Location: Cell membrane ,Cytoplasm
Immunogen: KLH conjugated synthetic peptide derived from human KCNG3: 251-350/436. < Extracellular >		
Purification: affinity purified by Protein A		
Concentration: 1mg/ml		
Storage: 0.01M TBS (pH7.4) with 1% BSA, 0.02% Proclin300 and 50% Glycerol. Shipped at 4°C. Store at -20°C for one year. Avoid repeated freeze/thaw cycles.		
Background: Voltage-gated potassium (Kv) channels represent the most complex class of voltage-gated ion channels from both functional and structural standpoints. Their diverse functions include regulating neurotransmitter release, heart rate, insulin secretion, neuronal excitability, epithelial electrolyte transport, smooth muscle contraction, and cell volume. This gene encodes a member of the potassium channel, voltage-gated, subfamily G. This member is a gamma subunit functioning as a modulatory molecule. Alternative splicing results in two transcript variants encoding distinct isoforms. [provided by RefSeq, Jul 2008].		

— VALIDATION IMAGES —

Sample: Lane 1: Human Jurkat cell Lysates Lane

2: Human SH-SY5Y cell Lysates Primary: Anti-KCNG3 (bs-12175R) at 1/1000 dilution

Secondary: IRDye800CW Goat Anti-Rabbit IgG at 1/20000 dilution Predicted band size: 50kDa

Observed band size: 110kDa