

bs-12173R**[Primary Antibody]****KCNF1 Rabbit pAb****Bioss**
ANTIBODIES

www.bioss.com.cn

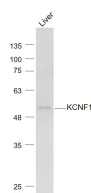
sales@bioss.com.cn

techsupport@bioss.com.cn

400-901-9800

— DATASHEET —

Host: Rabbit	Isotype: IgG	Applications: WB (1:500-2000)
Clonality: Polyclonal		Reactivity: Mouse (predicted: Human, Rat, Rabbit, Pig, Sheep, Cow, Chicken, Dog, GuineaPig, Horse)
GeneID: 3754	SWISS: Q9H3M0	Predicted MW.: 56 kDa
Target: KCNF1		Subcellular Location: Cell membrane
Immunogen: KLH conjugated synthetic peptide derived from human KCNF1: 161-260/494. < Extracellular >		
Purification: affinity purified by Protein A		
Concentration: 1mg/ml		
Storage: 0.01M TBS (pH7.4) with 1% BSA, 0.02% Proclin300 and 50% Glycerol. Shipped at 4°C. Store at -20°C for one year. Avoid repeated freeze/thaw cycles.		
Background: KCNF1 is a multi-pass membrane-bound protein that acts as an ion channel and is generally expressed as a heterotetramer of potassium channeling proteins. Formerly known as kH1, KCNF1 is usually found as a heteromer with three other potassium channel proteins, KCNG3, KV6.3 and KCNV2. As a potassium channel protein, KCNF1 plays a role in regulating apoptosis and proliferation of pulmonary artery smooth muscle (PASM) cells. Bone morphogenetic proteins (BMPs) restrict proliferation and can induce apoptosis in normal human PASM cells and will upregulate expression of KCNF1 in PASM cells in vitro. KCNF1 is expressed in heart, brain, liver, skeletal muscle, kidney and pancreas.		

— VALIDATION IMAGES —

Sample: Liver (Mouse) Lysate at 40 ug Primary:

Anti- KCNF1 (bs-12173R) at 1/1000 dilution

Secondary: IRDye800CW Goat Anti-Rabbit IgG at

1/20000 dilution Predicted band size: 56 kD

Observed band size: 56 kD

— SELECTED CITATIONS —

- **[IF=4.43]** Slaats et al. Screen-based identification and validation of four new ion channels as regulators of renal ciliogenesis. (2015) J.Cell.Sc. 128:4550-9 IF, WB ; Mouse. 26546361