

**bs-4979R****[ Primary Antibody ]****eIF4E Rabbit pAb****BioSS**  
**ANTIBODIES**

www.bioss.com.cn

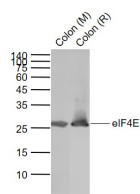
sales@bioss.com.cn

techsupport@bioss.com.cn

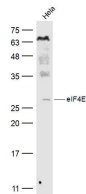
400-901-9800

**— DATASHEET —****Host:** Rabbit**Isotype:** IgG**Clonality:** Polyclonal**GeneID:** 1977**SWISS:** P06730**Target:** eIF4E**Immunogen:** KLH conjugated synthetic peptide derived from human eIF4E: 121-217/217.**Purification:** affinity purified by Protein A**Concentration:** 1mg/ml**Storage:** 0.01M TBS (pH7.4) with 1% BSA, 0.02% Proclin300 and 50% Glycerol.

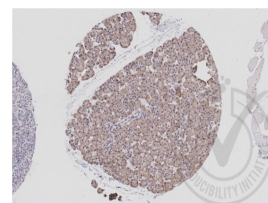
Shipped at 4°C. Store at -20°C for one year. Avoid repeated freeze/thaw cycles.

**Background:** eIF4E, a protein modulates translation of maternal mRNAs in early embryos before the onset of zygotic transcription. eIF4E also influences the overall rate of translation. eIF4E binds to the 7 methyl GTP cap structure of eukaryotic mRNAs. Phosphorylation of eIF4E on serine 209 regulates the affinity of this protein for the 7 methyl GTP cap and/or RNA. Phosphorylation also enhances the interaction of eIF4E with eIF4G, which form a complex known as eIF4F. eIF4E phosphorylation is correlated with increased translational rate in a number of cell types. Several kinases are currently being investigated as potential regulators of eIF4E including PKC and/or the MAP kinase activated Mnk.**Applications:** WB (1:500-2000)**IHC-P** (1:100-500)**IHC-F** (1:100-500)**IF** (1:100-500)**Reactivity:** Human, Mouse, Rat**Predicted MW.:** 24 kDa**Subcellular Location:** Cytoplasm ,Nucleus**— VALIDATION IMAGES —**

Sample: Lane 1: Colon (Mouse) Lysate at 40 ug  
 Lane 2: Colon (Rat) Lysate at 40 ug  
 Primary: Anti-eIF4E (bs-4979R) at 1/1000 dilution  
 Secondary: IRDye800CW Goat Anti-Rabbit IgG at 1/20000 dilution  
 Predicted band size: 27 kD  
 Observed band size: 27 kD



Sample: HeLa(Human) Cell Lysate at 30 ug  
 Primary: Anti-eIF4E (bs-4979R) at 1/500 dilution  
 Secondary: IRDye800CW Goat Anti-Rabbit IgG at 1/20000 dilution  
 Predicted band size: 24 kD  
 Observed band size: 28 kD



Independently Validated Antibody, image provided by Science Direct, badge number 029640: Formalin-fixed and paraffin embedded human pancreas labeled with Anti-eIF4E Polyclonal Antibody, Unconjugated (bs-4979R) at 1:250 followed by conjugation to the secondary antibody and DAB staining