

bs-12073R**[Primary Antibody]****P2Y8 Rabbit pAb****Bioss**
ANTIBODIES

www.bioss.com.cn

sales@bioss.com.cn

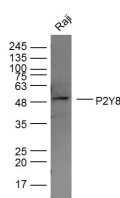
techsupport@bioss.com.cn

400-901-9800

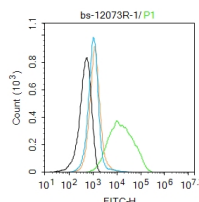
— DATASHEET —**Host:** Rabbit**Isotype:** IgG**Clonality:** Polyclonal**GeneID:** 286530**SWISS:** Q86VZ1**Target:** P2Y8**Immunogen:** KLH conjugated synthetic peptide derived from human P2Y8: 131-230/359. < Extracellular >**Purification:** affinity purified by Protein A**Concentration:** 1mg/ml**Storage:** 0.01M TBS (pH7.4) with 1% BSA, 0.02% Proclin300 and 50% Glycerol.

Shipped at 4°C. Store at -20°C for one year. Avoid repeated freeze/thaw cycles.

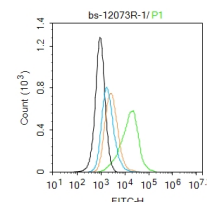
Background: G protein-coupled receptors (GPRs), also known as seven transmembrane receptors, heptahelical receptors or 7TM receptors, comprise a superfamily of proteins that play a role in many different stimulus-response pathways. G-protein coupled receptors translate extracellular signals into intracellular signals (G-protein activation) and they respond to a variety of signaling molecules, such as hormones and neurotransmitters. P2RY8 (purinergic receptor P2Y, G-protein coupled, 8), also known as P2Y8, is a 359 amino acid multi-pass membrane protein that localizes to the cell membrane and belongs to the G protein-coupled receptor family. Expressed at low levels in lung, heart and kidney, P2RY8 may function as a receptor for purines that are coupled to G proteins and may also play a role in mental retardation.

Applications: WB (1:500-2000)**Flow-Cyt** (2ug/Test)**Reactivity:** Human**Predicted MW.:** 41 kDa**Subcellular Location:** Cell membrane**— VALIDATION IMAGES —**

Sample: Raji Cell (Human) Lysate at 30 ug
 Primary: Anti- P2Y8 (bs-12073R) at 1/300 dilution
 Secondary: IRDye800CW Goat Anti-Rabbit IgG at 1/20000 dilution Predicted band size: 66 kD
 Observed band size: 50 kD



Blank control: HL60. Primary Antibody (green line): Rabbit Anti-P2Y8 antibody (bs-12073R)
 Dilution: 2µg /10⁶ cells; Isotype Control Antibody (orange line): Rabbit IgG . Secondary Antibody (blue line): Goat anti-rabbit IgG-AF488
 Dilution: 1µg /test. Protocol The cells were incubated in 5%BSA to block non-specific protein-protein interactions for 30 min at room temperature .Cells stained with Primary Antibody for 30 min at room temperature.The secondary antibody used for 40 min at room temperature. Acquisition of 20,000 events was performed.



Blank control: Raji. Primary Antibody (green line): Rabbit Anti-P2Y8 antibody (bs-12073R)
 Dilution: 2µg /10⁶ cells; Isotype Control Antibody (orange line): Rabbit IgG . Secondary Antibody : Goat anti-rabbit IgG-AF488 Dilution: 1µg /test. Protocol The cells were incubated in 5%BSA to block non-specific protein-protein interactions for 30 min at room temperature .Cells stained with Primary Antibody for 30 min at room temperature. The secondary antibody used for 40 min at room temperature. Acquisition of 20,000 events was performed.