

bs-12070R**[Primary Antibody]****Bioss**
ANTIBODIES

www.bioss.com.cn

sales@bioss.com.cn

techsupport@bioss.com.cn

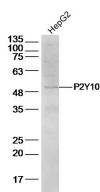
400-901-9800

P2Y10 Rabbit pAb

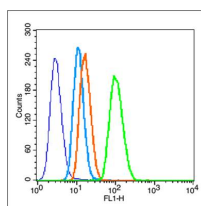
— DATASHEET —

<p>Host: Rabbit</p> <p>Clonality: Polyclonal</p> <p>GeneID: 27334</p> <p>Target: P2Y10</p> <p>Immunogen: KLH conjugated synthetic peptide derived from human P2Y10: 151-250/339. < Extracellular ></p> <p>Purification: affinity purified by Protein A</p> <p>Concentration: 1mg/ml</p> <p>Storage: 0.01M TBS (pH7.4) with 1% BSA, 0.02% Proclin300 and 50% Glycerol. Shipped at 4°C. Store at -20°C for one year. Avoid repeated freeze/thaw cycles.</p> <p>Background: Nucleotides are important extracellular signaling molecules that mediate several events, such as cell proliferation, differentiation, chemotaxis and cytokine release. The P2 receptor family is activated by the binding of nucleotides and is divided into two subfamilies, designated P2X and P2Y. The P2Y receptor family are G protein-coupled receptors that mediate the effects of extracellular nucleotides, primarily through the activation of phospholipase C (PLC). To some extent, the P2Y receptors can also activate potassium channels or, alternatively, inhibit adenylate cyclase and N-type calcium channels in response to extracellular nucleotides. P2Y10 (purinergic receptor P2Y, G-protein coupled, 10), also known as P2RY10, is a 339 amino acid multi-pass membrane protein that is thought to act as a receptor for purines coupled to G-proteins. P2Y10 is found at low levels in blood leukocytes and is upregulated during promyelocytic cell differentiation.</p>	<p>Isotype: IgG</p> <p>SWISS: O00398</p>	<p>Applications: WB (1:500-2000) Flow-Cyt (1µg/Test)</p> <p>Reactivity: Human (predicted: Mouse, Rat, Rabbit, Horse)</p> <p>Predicted MW.: 39 kDa</p> <p>Subcellular Location: Cell membrane</p>
--	--	--

— VALIDATION IMAGES —



Sample: HepG2 cell(human) Lysate at 30 ug
 Primary: Anti-P2Y10(bs-12070R) at 1/500 dilution
 Secondary: IRDye800CW Goat Anti-Rabbit IgG at 1/20000 dilution Predicted band size: 39kD
 Observed band size: 49 kD



Blank control (blue line): raji(fixed with pre-warmed 4% paraformaldehyde for 30min at 37°C) Primary Antibody (green line): Rabbit Anti-P2Y10 antibody (bs-12070R),Dilution: 0.2µg /10⁶ cells; Isotype Control Antibody (orange line): Rabbit IgG . Secondary Antibody (white blue line): Goat anti-rabbit IgG-PE,Dilution: 1µg /test.