

bs-12069R**[Primary Antibody]****BioSS**
ANTIBODIES

www.bioss.com.cn

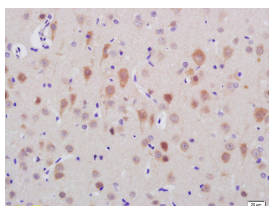
sales@bioss.com.cn

techsupport@bioss.com.cn

400-901-9800

TTC21B Rabbit pAb**— DATASHEET —**

Host: Rabbit	Isotype: IgG	Applications: IHC-P (1:100-500)
Clonality: Polyclonal		IHC-F (1:100-500)
GeneID: 79809	SWISS: Q7Z4L5	IF (1:100-500)
Target: TTC21B		Reactivity: Rat (predicted: Human, Mouse, Rabbit, Pig, Sheep, Cow, Dog, Horse)
Immunogen: KLH conjugated synthetic peptide derived from human TTC21B: 1221-1316/1316.		Predicted MW.: 150 kDa
Purification: affinity purified by Protein A		Subcellular Location: Cytoplasm
Concentration: 1mg/ml		
Storage: 0.01M TBS (pH7.4) with 1% BSA, 0.02% Proclin300 and 50% Glycerol. Shipped at 4°C. Store at -20°C for one year. Avoid repeated freeze/thaw cycles.		
Background: This gene encodes a member of TTC21 family, containing several tetratricopeptide repeat (TPR) domains. This protein is localized to the cilium axoneme, and may play a role in retrograde intraflagellar transport in cilia. Mutations in this gene are associated with various ciliopathies, nephronophthisis 12, and asphyxiating thoracic dystrophy 4. [provided by RefSeq, Oct 2011]		

— VALIDATION IMAGES —

Tissue/cell: rat brain tissue; 4% Paraformaldehyde-fixed and paraffin-embedded; Antigen retrieval: citrate buffer (0.01M, pH 6.0), Boiling bathing for 15min; Block endogenous peroxidase by 3% Hydrogen peroxide for 30min; Blocking buffer (normal goat serum, C-0005) at 37°C for 20 min; Incubation: Anti-TTC21B Polyclonal Antibody, Unconjugated(bs-12069R) 1:200, overnight at 4°C, followed by conjugation to the secondary antibody(SP-0023) and DAB(C-0010) staining