

bs-12067R**[Primary Antibody]****BioSS**
ANTIBODIES

www.bioss.com.cn

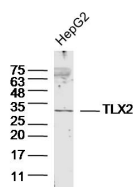
sales@bioss.com.cn

techsupport@bioss.com.cn

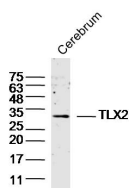
400-901-9800

TLX2 Rabbit pAb**— DATASHEET —**

Host: Rabbit	Isotype: IgG	Applications: WB (1:500-2000)
Clonality: Polyclonal		Reactivity: Human, Rat (predicted: Mouse, Rabbit, Pig, Sheep, Cow, Dog, Horse)
GeneID: 3196	SWISS: O43763	Predicted MW.: 30 kDa
Target: TLX2		Subcellular Location: Nucleus
Immunogen: KLH conjugated synthetic peptide derived from human TLX2: 101-200/284.		
Purification: affinity purified by Protein A		
Concentration: 1mg/ml		
Storage: 0.01M TBS (pH7.4) with 1% BSA, 0.02% Proclin300 and 50% Glycerol. Shipped at 4°C. Store at -20°C for one year. Avoid repeated freeze/thaw cycles.		
Background: T-cell leukemia homeobox protein 2 (TLX2), also known as homeobox protein Hox-11L1 (HOX11L1), neural crest homeobox protein (NCX) or ENX, is a 284 amino acid member of the TLX homeobox family. The mouse homolog, Tlx2, has been detected in dorsal-root ganglia, cranial and enteric-nerve ganglia, parasympathetic ganglia and adrenal glands in mouse embryos and in the adrenal glands, intestine and heart of adult mice. The expression pattern of Tlx2, which is restricted to tissues derived from neural crest cells, suggests that it may play a role in the proliferation or differentiation of the enteric peripheral nervous system. TLX2, which is localized to the nucleus, is highly homologous to mouse Tlx2, and shares several critical domains, including an enhancer element in the promoter that is crucial for tissue-specific expression. Mutations in the gene encoding mouse Tlx2 lead to congenital anomalies closely resembling neuronal intestinal dysplasia in humans. Thus, TLX2 is thought to play a role in this disease, which is a rare condition characterized by hyperplasia of submucosal plexus with giant submucosal ganglia and increased acetylcholinesterase activity in nerve fiber around submucosal blood vessels.		

— VALIDATION IMAGES —

Sample: HepG2 (Human) Cell Lysate at 40 ug
 Primary: Anti-TLX2(bs-12067R) at 1/300 dilution
 Secondary: IRDye800CW Goat Anti-Rabbit IgG at 1/20000 dilution
 Predicted band size: 30kD
 Observed band size: 30kD



Sample: Cerebrum (Rat) Lysate at 40 ug
 Primary: Anti-TLX2(bs-12067R) at 1/300 dilution
 Secondary: IRDye800CW Goat Anti-Rabbit IgG at 1/20000 dilution
 Predicted band size: 30kD
 Observed band size: 30kD