

## DSS1 Rabbit pAb

Catalog Number: bs-14432R

Target Protein: DSS1

Concentration: 1mg/ml

Form: Liquid

Host: Rabbit

Clonality: Polyclonal

Isotype: IgG

Applications: IHC-P (1:100-500), IHC-F (1:100-500), IF (1:100-500)

Reactivity: Human (predicted:Rabbit, Pig, Cow)

Predicted MW: 8.3 kDa

Subcellular: Cytoplasm, Nucleus

Locations:

Entrez Gene: 7979

Swiss Prot: Q6ZVN7

Source: KLH conjugated synthetic peptide derived from human DSS1: 1-70/70.

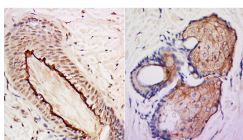
Purification: affinity purified by Protein A

Storage: 0.01M TBS (pH7.4) with 1% BSA, 0.02% Proclin300 and 50% Glycerol.

Shipped at 4°C. Store at -20°C for one year. Avoid repeated freeze/thaw cycles.

**Background:** SEM1 (SEM1, 26S Proteasome Complex Subunit) is a Protein Coding gene. Diseases associated with SEM1 include Split Foot and Split Hand-Split Foot Malformation. Among its related pathways are RET signaling and Transport of glucose and other sugars, bile salts and organic acids, metal ions and amine compounds.

### VALIDATION IMAGES



Tissue/cell: human skin tissue; 4% Paraformaldehyde-fixed and paraffin-embedded; Antigen retrieval: citrate buffer (0.01M, pH 6.0), Boiling bathing for 15min; Block endogenous peroxidase by 3% Hydrogen peroxide for 30min; Blocking buffer (normal goat serum, C-0005) at 37°C for 20 min; Incubation: Anti-DSS1 Polyclonal Antibody, Unconjugated (bs-14432R) 1:500, overnight at 4°C, followed by conjugation to the secondary antibody (SP-0023) and DAB (C-0010) staining