

bs-14428R**[Primary Antibody]****DRP2 Rabbit pAb****BioSS**
ANTIBODIES

www.bioss.com.cn

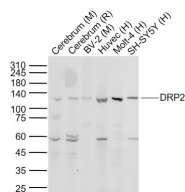
sales@bioss.com.cn

techsupport@bioss.com.cn

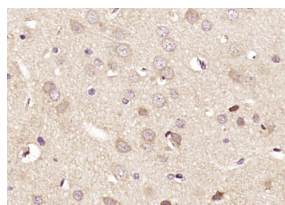
400-901-9800

DATASHEET

Host: Rabbit	Isotype: IgG	Applications: WB (1:500-2000) IHC-P (1:100-500) IHC-F (1:100-500) IF (1:100-500) Reactivity: Human, Mouse, Rat (predicted: Pig, Sheep, Cow, Dog, Horse) Predicted MW.: 110 kDa Subcellular Location: Cytoplasm
Clonality: Polyclonal		
GeneID: 1821	SWISS: Q13474	
Target: DRP2		
Immunogen: KLH conjugated synthetic peptide derived from human DRP2: 801-900/957.		
Purification: affinity purified by Protein A		
Concentration: 1mg/ml		
Storage: 0.01M TBS (pH7.4) with 1% BSA, 0.02% Proclin300 and 50% Glycerol. Shipped at 4°C. Store at -20°C for one year. Avoid repeated freeze/thaw cycles.		
Background: Members of the dystrophin family of proteins perform a critical role in the maintenance of membrane-associated complexes at points of intercellular contact in vertebrate cells. The protein encoded by this gene is predicted to resemble certain short C-terminal isoforms of dystrophin and dystrophin-related protein 1 (DRP1 or utrophin). DRP2 is expressed principally in the brain and spinal cord. Two transcript variants encoding different isoforms have been found for this gene. [provided by RefSeq, Jan 2010]		

VALIDATION IMAGES

Sample: Lane 1: Cerebrum (Mouse) Tissue Lysate at 40 ug Lane 2: Cerebrum (Rat) Tissue Lysate at 40 ug Lane 3: BV-2 (Mouse) Cell Lysate at 30 ug Lane 4: Huvec (Human) Cell Lysate at 30 ug Lane 5: Molt-4 (Human) Cell Lysate at 30 ug Lane 6: SH-SY5Y (Human) Cell Lysate at 30 ug Primary: Anti-DRP2 (bs-14428R) at 1/1000 dilution Secondary: IRDye800CW Goat Anti-Rabbit IgG at 1/20000 dilution Predicted band size: 110 kD Observed band size: 120 kD



Paraformaldehyde-fixed, paraffin embedded (rat brain); Antigen retrieval by boiling in sodium citrate buffer (pH6.0) for 15min; Block endogenous peroxidase by 3% hydrogen peroxide for 20 minutes; Blocking buffer (normal goat serum) at 37°C for 30min; Antibody incubation with (DRP2) Polyclonal Antibody, Unconjugated (bs-14428R) at 1:200 overnight at 4°C, followed by operating according to SP Kit(Rabbit) (sp-0023) instructions and DAB staining.