

PCBD2 Rabbit pAb

Catalog Number: bs-19906R

Target Protein: PCBD2

Concentration: 1mg/ml

Form: Liquid

Host: Rabbit

Clonality: Polyclonal

Isotype: IgG

Applications: WB (1:500-2000)

Reactivity: Rat (predicted:Human, Mouse, Sheep, Cow, Horse)

Predicted MW: 14 kDa

Entrez Gene: 84105

Swiss Prot: Q9H0N5

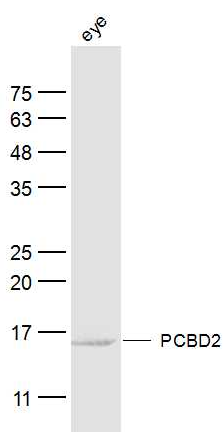
Source: KLH conjugated synthetic peptide derived from human PCBD2: 31-130/130.

Purification: affinity purified by Protein A

Storage: 0.01M TBS (pH7.4) with 1% BSA, 0.02% Proclin300 and 50% Glycerol.

Shipped at 4°C. Store at -20°C for one year. Avoid repeated freeze/thaw cycles.

VALIDATION IMAGES



Sample: Eye (Rat) Lysate at 40 ug Primary: Anti-PCBD2 (bs-19906R) at 1/300 dilution Secondary: IRDye800CW Goat Anti-Rabbit IgG at 1/20000 dilution Predicted band size: 14 kD Observed band size: 14 kD