

**bs-19895R**

**[ Primary Antibody ]**

## PASD1/CT63 Rabbit pAb

**Bioss**  
ANTIBODIES

www.bioss.com.cn

sales@bioss.com.cn

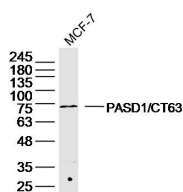
techsupport@bioss.com.cn

400-901-9800

### — DATASHEET —

<b>Host:</b> Rabbit	<b>Isotype:</b> IgG	<b>Applications:</b> WB (1:500-2000)
<b>Clonality:</b> Polyclonal		<b>Reactivity:</b> Human
<b>GeneID:</b> 139135	<b>SWISS:</b> Q8IV76	
<b>Target:</b> PASD1/CT63		
<b>Immunogen:</b> KLH conjugated synthetic peptide derived from human PASD1/CT63: 1-100/773.		<b>Predicted MW.:</b> 70 kDa
<b>Purification:</b> affinity purified by Protein A		<b>Subcellular Location:</b> Nucleus
<b>Concentration:</b> 1mg/ml		
<b>Storage:</b> 0.01M TBS (pH7.4) with 1% BSA, 0.02% Proclin300 and 50% Glycerol. Shipped at 4°C. Store at -20°C for one year. Avoid repeated freeze/thaw cycles.		
<b>Background:</b> This gene encodes a protein that is thought to function as a transcription factor. The protein is a cancer-associated antigen that can stimulate autologous T-cell responses, and it is therefore considered to be a potential immunotherapeutic target for the treatment of various hematopoietic malignancies, including diffuse large B-cell lymphoma. [provided by RefSeq, May 2010]		

### — VALIDATION IMAGES —



Sample: MCF-7 Cell (Human) Lysate at 40 ug  
Primary: Anti-PASD1/CT63 (bs-19895R) at 1/300  
dilution Secondary: IRDye800CW Goat Anti-  
Rabbit IgG at 1/20000 dilution Predicted band  
size: 70 kD Observed band size: 73 kD