

bs-14413R**[Primary Antibody]****BioSS**
ANTIBODIES

www.bioss.com.cn

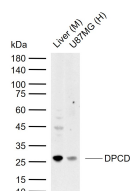
sales@bioss.com.cn

techsupport@bioss.com.cn

400-901-9800

DPCD Rabbit pAb**— DATASHEET —**

Host: Rabbit	Isotype: IgG	Applications: WB (1:500-2000)
Clonality: Polyclonal		Reactivity: Human, Mouse (predicted: Rat, Pig, Cow, Chicken, Dog, Horse)
GeneID: 25911	SWISS: Q9BVM2	Predicted MW.: 23 kDa
Target: DPCD		Subcellular Location: Nucleus
Immunogen: KLH conjugated synthetic peptide derived from human DPCD: 121-203/203.		
Purification: affinity purified by Protein A		
Concentration: 1mg/ml		
Storage: 0.01M TBS (pH7.4) with 1% BSA, 0.02% Proclin300 and 50% Glycerol. Shipped at 4°C. Store at -20°C for one year. Avoid repeated freeze/thaw cycles.		
Background: DPCD is a 203 amino acid protein that is expressed at higher levels during ciliated cell differentiation, suggesting that DPCD plays a role in the function or formation of ciliated cells. In primary ciliary dyskinesia (PCD), an autosomal recessive disease that is caused by mutations affecting the proper function of cilia, an exon in the DPCD gene is deleted. The phenotype of PCD is variable, though it may include symptoms such as sinus inverse totalis, infertility or otitis media. In severe cases, patients develop end-stage bronchiectasis and require a lung transplantation. DPCD is highly expressed in testis, with weak expression in heart, pancreas and skeletal muscle.		

— VALIDATION IMAGES —

Sample: Lane 1: Mouse Liver tissue lysates Lane
2: Human U87MG cell lysates Primary: Anti-DPCD
(bs-14413R) at 1/1000 dilution Secondary:
IRDye800CW Goat Anti-Rabbit IgG at 1/20000
dilution Predicted band size: 23 kDa Observed
band size: 26 kDa