
DOPEY1 Rabbit pAb

Catalog Number: bs-14409R

Target Protein: DOPEY1

Concentration: 1mg/ml

Form: Liquid

Host: Rabbit

Clonality: Polyclonal

Isotype: IgG

Applications: IHC-P (1:100-500), IHC-F (1:100-500), IF (1:100-500)

Reactivity: Rat (predicted:Human, Mouse, Pig, Sheep, Cow, Dog, Horse)

Predicted MW: 277 kDa

Subcellular Cytoplasm

Locations:

Entrez Gene: 23033

Swiss Prot: Q5JWR5

Source: KLH conjugated synthetic peptide derived from human DOPEY1: 351-450/2465.

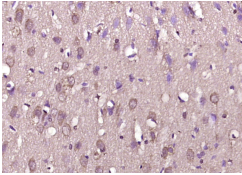
Purification: affinity purified by Protein A

Storage: 0.01M TBS (pH7.4) with 1% BSA, 0.02% Proclin300 and 50% Glycerol.

Shipped at 4°C. Store at -20°C for one year. Avoid repeated freeze/thaw cycles.

Background: Dopey-1 is a 2,465 amino acid protein that is thought to be involved in protein trafficking between the late golgi and early endosomes and may be involved in neurological alternations and mental retardation associated with Down syndrome. The gene encoding Dopey-1 maps to human chromosome 6, which contains 170 million base pairs and comprises nearly 6% of the human genome. Deletion of a portion of the q arm of chromosome 6 is associated with early onset intestinal cancer, suggesting the presence of a cancer susceptibility locus. Additionally, Porphyria cutanea tarda, Parkinson's disease, Stickler syndrome and a susceptibility to bipolar disorder are all associated with genes that map to chromosome 6.

VALIDATION IMAGES



Paraformaldehyde-fixed, paraffin embedded (rat brain); Antigen retrieval by boiling in sodium citrate buffer (pH6.0) for 15min; Block endogenous peroxidase by 3% hydrogen peroxide for 20 minutes; Blocking buffer (normal goat serum) at 37°C for 30min; Antibody incubation with (DOPEY1) Polyclonal Antibody, Unconjugated (bs-14409R) at 1:200 overnight at 4°C, followed by operating according to SP Kit(Rabbit) (sp-0023) instructions and DAB staining.