

bs-14408R**[Primary Antibody]****BioSS**
ANTIBODIES

www.bioss.com.cn

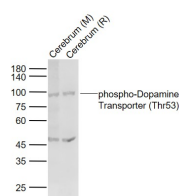
sales@bioss.com.cn

techsupport@bioss.com.cn

400-901-9800

phospho-Dopamine Transporter (Thr53) Rabbit pAb**— DATASHEET —**

Host: Rabbit	Isotype: IgG	Applications: WB (1:500-2000)
Clonality: Polyclonal		Reactivity: Mouse, Rat (predicted: Horse)
GeneID: 13162	SWISS: Q61327	
Target: phospho-Dopamine Transporter (Thr53)		Predicted MW.: 69 kDa
Immunogen: KLH conjugated Synthesised phosphopeptide derived from mouse Dopamine Transporter around the phosphorylation site of Thr53: PQ(p-T)PV.		Subcellular Location: Cell membrane ,Cytoplasm
Purification: affinity purified by Protein A		
Concentration: 1mg/ml		
Storage: 0.01M TBS (pH7.4) with 1% BSA, 0.02% Proclin300 and 50% Glycerol. Shipped at 4°C. Store at -20°C for one year. Avoid repeated freeze/thaw cycles.		
Background: This gene encodes a dopamine transporter which is a member of the sodium- and chloride-dependent neurotransmitter transporter family. The 3' UTR of this gene contains a 40 bp tandem repeat, referred to as a variable number tandem repeat or VNTR, which can be present in 3 to 11 copies. Variation in the number of repeats is associated with idiopathic epilepsy, attention-deficit hyperactivity disorder, dependence on alcohol and cocaine, susceptibility to Parkinson disease and protection against nicotine dependence.[provided by RefSeq, Nov 2009]		

— VALIDATION IMAGES —

Sample: Lane 1: Cerebrum (Mouse) Lysate at 40 ug
Lane 2: Cerebrum (Rat) Lysate at 40 ug

Primary: Anti-phospho-Dopamine Transporter (Thr53) (bs-14408R) at 1/1000 dilution

Secondary: IRDye800CW Goat Anti-Rabbit IgG at 1/20000 dilution Predicted band size: 69 kD
Observed band size: 95 kD