

bs-14407R**[Primary Antibody]****DOLPP1 Rabbit pAb****BioSS**
ANTIBODIES

www.bioss.com.cn

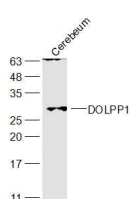
sales@bioss.com.cn

techsupport@bioss.com.cn

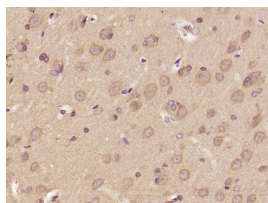
400-901-9800

— DATASHEET —

Host: Rabbit	Isotype: IgG	Applications: WB (1:500-2000) IHC-P (1:100-500) IHC-F (1:100-500) IF (1:100-500) Reactivity: Mouse, Rat (predicted: Human, Pig, Sheep, Cow, Chicken, Dog, Horse) Predicted MW.: 27 kDa Subcellular Location: Cytoplasm
Clonality: Polyclonal		
GeneID: 57171	SWISS: Q86YN1	
Target: DOLPP1		
Immunogen: KLH conjugated synthetic peptide derived from human DOLPP1: 151-238/238.		
Purification: affinity purified by Protein A		
Concentration: 1mg/ml		
Storage: 0.01M TBS (pH7.4) with 1% BSA, 0.02% Proclin300 and 50% Glycerol. Shipped at 4°C. Store at -20°C for one year. Avoid repeated freeze/thaw cycles.		
Background: A similar gene has been characterized in mice and encodes dolichyl pyrophosphate (Dol-P-P) phosphatase. This protein dephosphorylates dolichyl pyrophosphate so that it may be re-utilized as a glycosyl carrier lipid by the oligosaccharyltransferase multisubunit complex in the ER. Alternative splicing results in multiple transcript variants and protein isoforms. [provided by RefSeq, Jun 2012]		

— VALIDATION IMAGES —

Sample: Cerebrum (Mouse) Lysate at 40 ug
Primary: Anti-DOLPP1 (bs-14407R) at 1/300
dilution Secondary: IRDye800CW Goat Anti-
Rabbit IgG at 1/20000 dilution Predicted band
size: 27 kD Observed band size: 27 kD



Paraformaldehyde-fixed, paraffin embedded
(Rat brain); Antigen retrieval by boiling in
sodium citrate buffer (pH6.0) for 15min; Block
endogenous peroxidase by 3% hydrogen
peroxide for 20 minutes; Blocking buffer (normal
goat serum) at 37°C for 30min; Antibody
incubation with (DOLPP1) Polyclonal Antibody,
Unconjugated (bs-14407R) at 1:400 overnight at
4°C, followed by operating according to SP
Kit(Rabbit) (sp-0023) instructions and DAB
staining.