

DOLK Rabbit pAb

Catalog Number: bs-14406R

Target Protein: DOLK

Concentration: 1mg/ml

Form: Liquid

Host: Rabbit

Clonality: Polyclonal

Isotype: IgG

Applications: WB (1:500-2000)

Reactivity: Mouse (predicted:Human, Rat, Pig, Sheep, Cow, Chicken, Horse)

Predicted MW: 59 kDa

Entrez Gene: 22845

Swiss Prot: Q9UPQ8

Source: KLH conjugated synthetic peptide derived from human DOLK: 401-500/538.

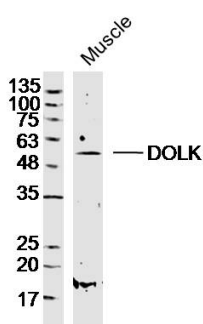
Purification: affinity purified by Protein A

Storage: 0.01M TBS (pH7.4) with 1% BSA, 0.02% Proclin300 and 50% Glycerol.

Shipped at 4°C. Store at -20°C for one year. Avoid repeated freeze/thaw cycles.

Background: The protein encoded by this gene catalyzes the CTP-mediated phosphorylation of dolichol, and is involved in the synthesis of Dol-P-Man, which is an essential glycosyl carrier lipid for C- and O-mannosylation, N- and O-linked glycosylation of proteins, and for the biosynthesis of glycosyl phosphatidylinositol anchors in endoplasmic reticulum. Mutations in this gene are associated with dolichol kinase deficiency.[provided by RefSeq, Apr 2010]

VALIDATION IMAGES



Sample: Muscle (Mouse) Lysate at 40 ug Primary: Anti-DOLK(bs-14406R) at 1/300 dilution Secondary: IRDye800CW Goat Anti-Rabbit IgG at 1/20000 dilution Predicted band size: 59kD Observed band size: 59kD