

**bs-1401R****[ Primary Antibody ]****SRF Rabbit pAb****Bioss**  
**ANTIBODIES**

www.bioss.com.cn

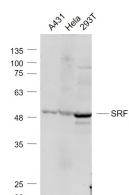
sales@bioss.com.cn

techsupport@bioss.com.cn

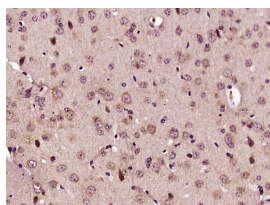
400-901-9800

**— DATASHEET —****Host:** Rabbit**Isotype:** IgG**Clonality:** Polyclonal**GeneID:** 6722**SWISS:** P11831**Target:** SRF**Immunogen:** KLH conjugated synthetic peptide derived from human SRF: 101-250/508.**Purification:** affinity purified by Protein A**Concentration:** 1mg/ml**Storage:** 0.01M TBS (pH7.4) with 1% BSA, 0.02% Proclin300 and 50% Glycerol.

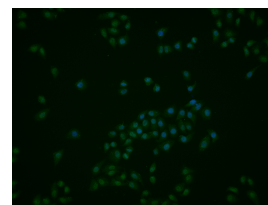
Shipped at 4°C. Store at -20°C for one year. Avoid repeated freeze/thaw cycles.

**Background:** This gene encodes a ubiquitous nuclear protein that stimulates both cell proliferation and differentiation. It is a member of the MADS (MCM1, Agamous, Deficiens, and SRF) box superfamily of transcription factors. This protein binds to the serum response element (SRE) in the promoter region of target genes. This protein regulates the activity of many immediate-early genes, for example c-fos, and thereby participates in cell cycle regulation, apoptosis, cell growth, and cell differentiation. This gene is the downstream target of many pathways; for example, the mitogen-activated protein kinase pathway (MAPK) that acts through the ternary complex factors (TCFs). [provided by RefSeq, Jul 2008].**Applications:** WB (1:500-2000)**IHC-P** (1:100-500)**IHC-F** (1:100-500)**IF** (1:100-500)**Flow-Cyt** (1ug/Test)**ICC/IF** (1:50)**Reactivity:** Human, Mouse  
(predicted: Rat, Pig, Cow, Dog)**Predicted MW.:** 56 kDa**Subcellular Location:** Nucleus**— VALIDATION IMAGES —**

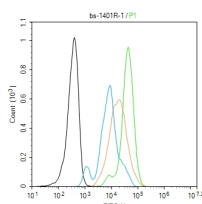
Sample: A431(Human) Cell Lysate at 30 ug  
 Hela(Human) Cell Lysate at 30 ug 293T(Human)  
 Cell Lysate at 30 ug Primary: Anti- SRF (bs-1401R)  
 at 1/1000 dilution Secondary: IRDye800CW Goat  
 Anti-Rabbit IgG at 1/20000 dilution Predicted  
 band size: 56 kD Observed band size: 52 kD



Paraformaldehyde-fixed, paraffin embedded  
 (Mouse brain); Antigen retrieval by boiling in  
 sodium citrate buffer (pH6.0) for 15min; Block  
 endogenous peroxidase by 3% hydrogen  
 peroxide for 20 minutes; Blocking buffer (normal  
 goat serum) at 37°C for 30min; Antibody  
 incubation with (SRF) Polyclonal Antibody,  
 Unconjugated (bs-1401R) at 1:500 overnight at  
 4°C, followed by a conjugated secondary  
 (sp-0023) for 20 minutes and DAB staining.



Hela cell; 4% Paraformaldehyde-fixed; Triton  
 X-100 at room temperature for 20 min; Blocking  
 buffer (normal goat serum, C-0005) at 37°C for 20  
 min; Antibody incubation with (SRF) polyclonal  
 Antibody, Unconjugated (bs-1401R) 1:50, 90  
 minutes at 37°C; followed by a conjugated Goat  
 Anti-Rabbit IgG antibody at 37°C for 90 minutes,  
 DAPI (blue, C02-04002) was used to stain the cell  
 nuclei.



Blank control (black line) :Hela, Primary  
 Antibody (green line): Rabbit Anti-SRF antibody  
 (bs-1401R) Dilution:1ug/Test; Secondary  
 Antibody (white blue line) : Goat anti-rabbit

**Important Note:** This product as supplied is intended for research use only, not for use in human, therapeutic or diagnostic applications.

IgG-FITC Dilution: 0.5ug/Test. Isotype control (orange line) : Normal Rabbit IgG Protocol The cells were fixed with 4% PFA (10min at room temperature)and then permeabilized with 90% ice-cold methanol for 20 min at -20°C, The cells were then incubated in 5%BSA to block non-specific protein-protein interactions for 30 min at room temperature. Cells stained with Primary Antibody for 30 min at room temperature. The secondary antibody used for 40 min at room temperature. Acquisition of 20,000 events was performed.

## — SELECTED CITATIONS —

---

- **[IF=2.2]** Wang Zi-qiang. et al. Shuangshi Tonglin Capsule Improves Prostate Fibrosis through Nrf2/TGF-β1 Signaling Pathways. CHIN J INTEGR MED. 2025 Apr;;1-11 WB ;Human. 40229627